



## CARROT RIVER SCHOOL

July 2022

MONTHLY REPORT

## Carrot River New School Replacement



Photo #01 – Pre-Construction, East Side of Gym, Basketball Tarmac, Playgrounds



## Carrot River New School Replacement



Photo #02 – Pre-Construction, Existing School Entrance

## Carrot River New School Replacement



Photo #03 – Pre-Construction, North Side of Gym, Field



## Carrot River New School Replacement



Photo #04 – Pre-Construction, Existing West Trees to be Removed, Running Track



## Carrot River New School Replacement



Photo #05 – Stripped Site



## Carrot River New School Replacement



Photo #06 – Stripped Site



## Carrot River New School Replacement



Photo #07 – Stripped Site





## CARROT RIVER SCHOOL

August 2022

MONTHLY REPORT

## Carrot River New School Replacement



Photo #01 – Piles along Grid Line 3



## Carrot River New School Replacement



Photo #02 – Piles along Grid Line E looking from Grid Line 5 south



## Carrot River New School Replacement



Photo #03 – Pile caps along Grid Line 2 looking from Grid Line E east

## Carrot River New School Replacement



Photo #04 – Piles along Grid Line 2 at new main entrance to school



## Carrot River New School Replacement



Photo #05 – West side of existing gym brick removed



## Carrot River New School Replacement



Photo #06 – North east corner of existing gym brick removed with piles covered.

Photo #07 – Stripped Site



## CARROT RIVER SCHOOL

September 2022

MONTHLY REPORT



## Carrot River New School Replacement



Photo #01 – Elevator Pit



## Carrot River New School Replacement



Photo #02 – Front Entrance looking south from Elevator



## Carrot River New School Replacement



Photo #03 – Grade Beam along Grid Lines 8 & B looking south

## Carrot River New School Replacement



Photo #04 – Piles along Grid Line 5 looking east



## Carrot River New School Replacement



Photo #05 – Room 106 Masonry



## Carrot River New School Replacement



Photo #06 – Room 106 Masonry





## CARROT RIVER SCHOOL

October 2022

MONTHLY REPORT

## Carrot River New School Replacement



Photo #01 – Clerestory Area



## Carrot River New School Replacement



Photo #02 – Front Entrance

## Carrot River New School Replacement



Photo #03 – Elevator Shaft



## Carrot River New School Replacement



Photo #04 – Structural Steel southwest corner

## Carrot River New School Replacement

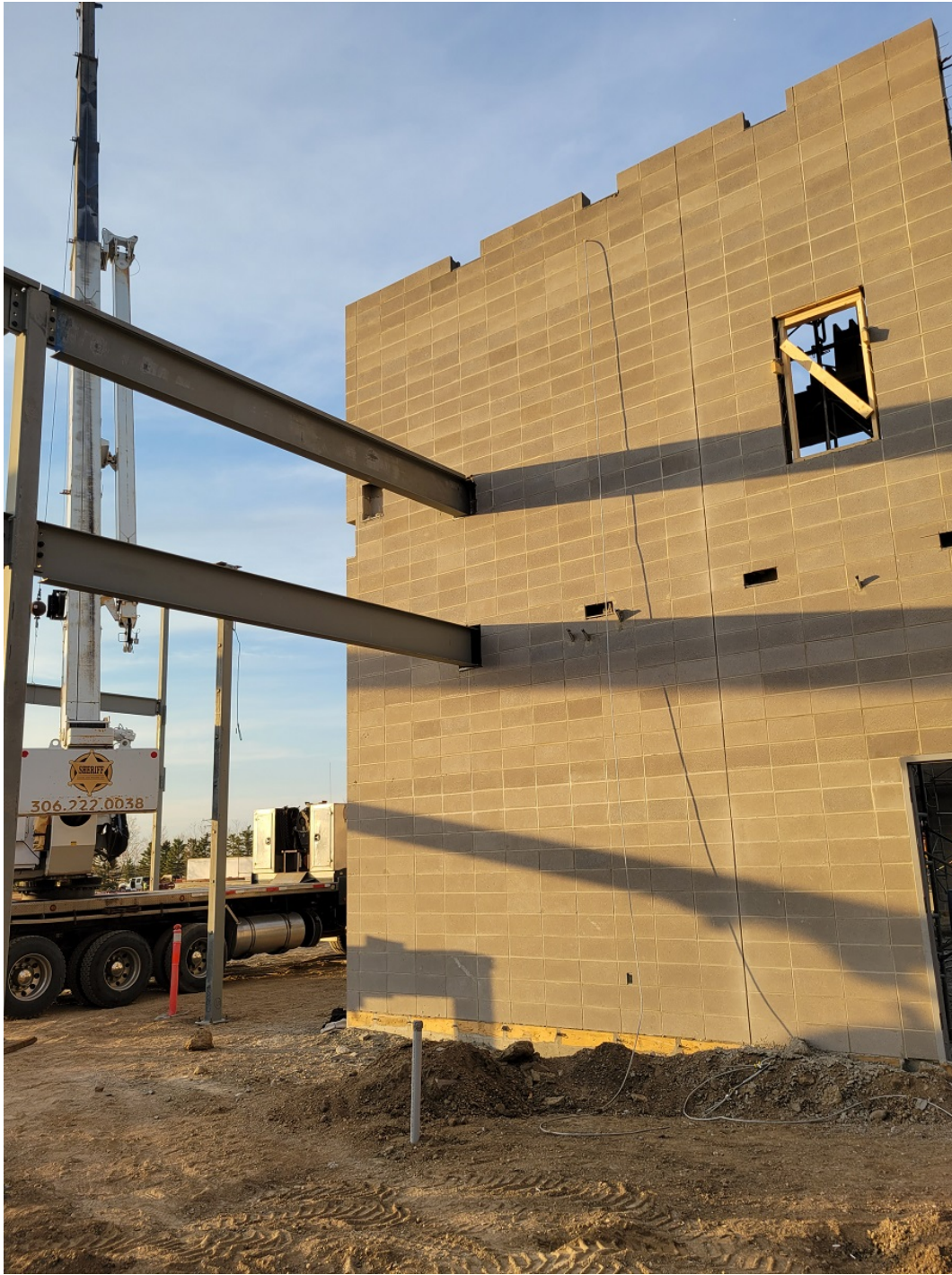


Photo #05 – Room 106 Masonry



## Carrot River New School Replacement



Photo #06 – Room 106 Masonry Steel

## Carrot River New School Replacement



Photo #07 – Room 106 Masonry





## CARROT RIVER SCHOOL

November 2022

MONTHLY REPORT

## Carrot River New School Replacement



Photo #01 – General site view looking south



## Carrot River New School Replacement



Photo #02 – Glulam installed

## Carrot River New School Replacement

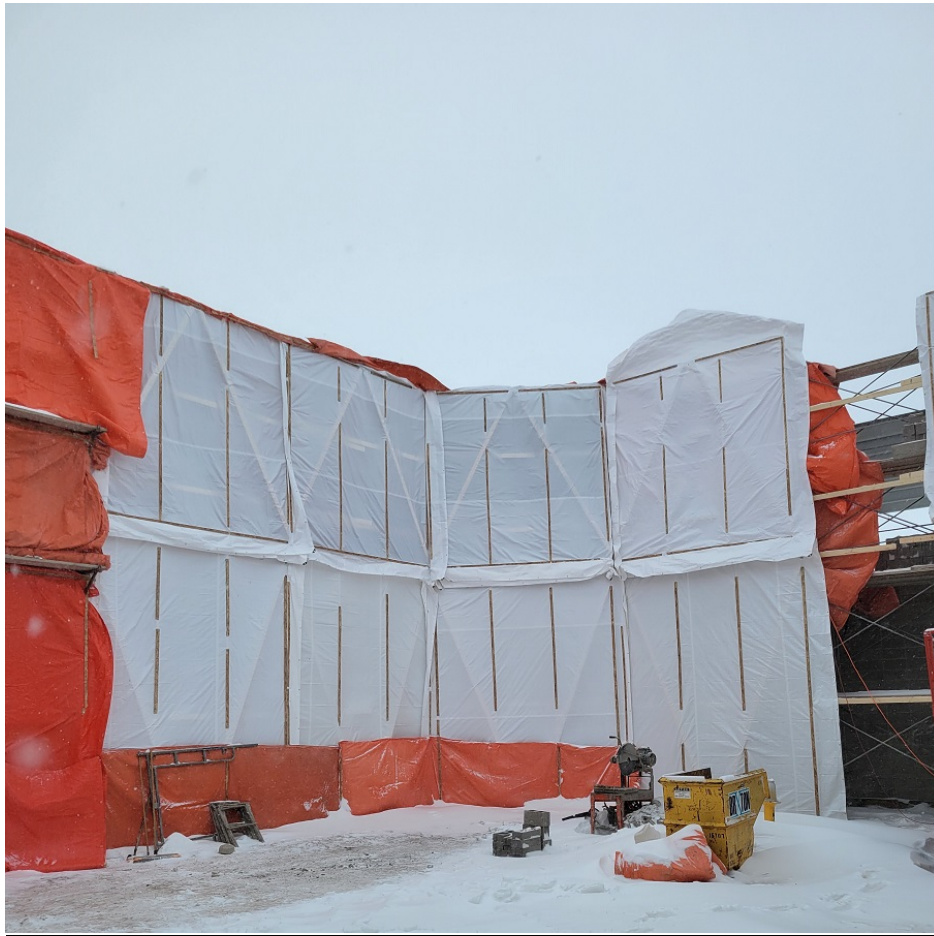


Photo #03 – Hoarding on Room 106 Masonry



## Carrot River New School Replacement



Photo #04 – Rom 106 Masonry Acoustic Block

## Carrot River New School Replacement



Photo #05 – Existing Gym Storage Demo



## Carrot River New School Replacement



Photo #06 – Existing Gym Structural Scaffold



## CARROT RIVER SCHOOL

December 2022

MONTHLY REPORT



## Carrot River New School Replacement



Photo #1 – Gym bleachers being removed

## Carrot River New School Replacement



Photo #2 – Gym looking north east



## Carrot River New School Replacement



Photo #3 – Gym looking south west

## Carrot River New School Replacement



Photo #4 – Gym west wall hoarding



## Carrot River New School Replacement



Photo #5 – Existing gym storage room

## Carrot River New School Replacement



Photo #6 – Existing gym storage



## Carrot River New School Replacement



Photo #7 – PAA room looking north

## Carrot River New School Replacement



Photo #8 – Room 106 east masonry wall hoarding



## Carrot River New School Replacement



Photo #9 – Room 106 west wall with sound block

## Carrot River New School Replacement



Photo #10 – North exterior



## Carrot River New School Replacement



Photo #11 – North exterior



## CARROT RIVER SCHOOL

January 2023

MONTHLY REPORT



## Carrot River New School Replacement



Photo #1 – Room 106 Trusses and Roof Decking

## Carrot River New School Replacement



Photo #2 – Roof Parapets over Administration offices



## Carrot River New School Replacement



Photo #3 – Site looking at Grade 3 and Elementary Art Classrooms

## Carrot River New School Replacement



Photo #4 – Hoarding on North West corner



## Carrot River New School Replacement



Photo #5 – Stairwell 4 in North West Corner

## Carrot River New School Replacement



Photo #6 – Phase 1 Undergrounds for Slab Prep



## Carrot River New School Replacement



Photo #7 – Exterior Brick Veneer

## Carrot River New School Replacement



Photo #8 – Clerestory Protection and Roof Deck





## CARROT RIVER SCHOOL

May 2023

MONTHLY REPORT

## Carrot River New School Replacement



Photo #1 – Exterior Brick on Phase 4



## Carrot River New School Replacement



Photo #2 – Exterior EIFS Vapour Barrier

## Carrot River New School Replacement



Photo #3 – Front Entrance



## Carrot River New School Replacement



Photo #4 – Student Commons Bench Area

## Carrot River New School Replacement



Photo #6 – Mechanical on Main Floor



## Carrot River New School Replacement



Photo #7 – Second Floor Washroom Block Fill

## Carrot River New School Replacement



Photo #8 – Second Floor Classroom Drywall



## Carrot River New School Replacement



Photo #9 – Second Floor Classroom Exterior Wall Insulation



## CARROT RIVER SCHOOL

June 2023

MONTHLY REPORT



## TABLE OF CONTENTS

1. Project Contact Information
2. Progress Report & Photos
3. Project Schedule, Phasing Plans
4. Weekly Priority Report
5. Outstanding RFI's Summary
6. CPR Summary
7. Consultant Inspection Reports Summary
8. Deliveries List
9. Mock-up List
10. Site Plan – Not included. Currently being updated
11. Upcoming Inspections, Commissioning, Testing – Not included this month



#### Contractor

Name	Email	Phone	Role	City	Company
Denin Kidd	DeninK@wrightconstruction.ca	306 934 0305	Project Manager	Saskatoon	Wright Construction Western Inc
Dustin Crawford	DustinC@wrightconstruction.ca	306 657 0396	Project Coordinator	Saskatoon	
Halil Cetin	halilc@wrightconstruction.ca	306 657 0354	Project Coordinator	Saskatoon	
Les Schlosser	less@wrightconstruction.ca	306 221 3902	Site Superintendent	Carrot River	
Vince Leier	vincel@wrightconstruction.ca	306 914 5608	Site Superintendent	Carrot River	
Kylee Wager	kyleew@wrightconstruction.ca	306 491 4580	Site Foreman	Carrot River	
Leslie Doka	LeslieD@wrightconstruction.ca	306 934 0440	Project Manager	Saskatoon	
Bob Watson	bobw@wrightconstruction.ca	306 657 0355	Safety Manager	Saskatoon	
Tori Ward	ap@wrightconstruction.ca	306 657 0357	Accounts Payable	Saskatoon	

#### Civil

Name	Email	Phone	Role	City	Company
Tim Ledding	tled ding@bcl-eng.ca	306 477 2822	Engineer	Saskatoon	BCL Engineering Ltd

#### Landscape

Name	Email	Phone	Role	City	Company
Marilyn Gould	mgould@htfc.ca	204 944 9907	Engineer	Saskatoon	HTFC Planning & Design
Katrina Grisé	kgrise@htfc.ca	204 944 9907	Tech	Saskatoon	

#### Architectural

Name	Email	Phone	Role	City	Company
Jason Hurd	jason.hurd@aodbt.com	306 922 5101	Architect	Prince Albert	aodbt architecture + interior design
Kyle Smith-Windsor	kyle.smith-windsor@aodbt.com	306 922 5101	Intern Architect	Prince Albert	
Kelsey Lockwood	kelsey.lockwood@aodbt.com	306 922 5102	Tech / CA	Saskatoon	
Tara Wasyluk	tara.wasyluk@aodbt.com	306 922 5102	Reviewer	Saskatoon	
Lyndon Thompson	lyndon.thompson@aodbt.com	306 922 5102	Contract Admin	Saskatoon	
Nicole Tiessen	nicole.tiessen@aodbt.com	306 922 5102	Interior Designer	Saskatoon	
Gerry Hillier	gerry.hillier@aodbt.com	306 922 5102	Spec Writer	Saskatoon	

#### Structural

Name	Email	Phone	Role	City	Company
Bradley Johnson	bradley@prakash.ca	306 922 2101	Engineer	Prince Albert	Prakash Engineering Ltd
Nathaniel Karpluk	nathaniel@prakasheng.ca	306 922 2101	Tech	Prince Albert	

#### Mechanical

Name	Email	Phone	Role	City	Company
Matt Wingerak	matt.wingerak@dwel.com	306 477 0678	Engineer	Saskatoon	Daniels Wingerak Engineering Ltd
Steve Schiml	steve.schiml@dwel.com	306 477 0678	Tech	Saskatoon	
Greg Pederson	greg.pederson@dwel.com	306 477 0678	Spec Writer	Saskatoon	

#### Electrical

Name	Email	Phone	Role	City	Company
Darran Stamm	stamm@alfaengltd.com	306 352 7989	Engineer	Regina	Alfa Engineering Ltd
Colin Abernethy	cabernethy@alfaengltd.com	306 352 7989	Tech	Regina	

#### Owners

Name	Email	Phone	Role	City	Company
Kayla Braun	kayla.braun3@gov.sk.ca	306 953 2581	Ministry	Regina	Ministry of SaskBuilds & Procurement
Mostafa Elaghoury	mostafa@midgardpm.com	306 546 3327	Project Manager	White City	Midgard Project Management
Jeff Zenner	zenner.jeff@nesd.ca	306 921 4282	Facilities Manager	Melfort	North East School Division
Wanda McLeod	McLeod.Wanda@nesd.ca	306 752 5741	Business Admin	Melfort	North East School Division
Kevin Yurkowski	yurkowski.kevin@nesd.ca	306 768 7867	Caretaker	Carrot River	North East School Division
Carrot River High School Principal: Sari Carson		306 768 2433		Carrot River	

#### Energy

Name	Email	Phone	Role	City	Company
Kevin Thurston	kthurston@teservices.ca	306 220 1998	Consultant	Saskatoon	Thurston Engineering Services
Ryan Basaraba	rbasaraba@teservices.ca	306 270 4566	Consultant	Saskatoon	



Section	Item	Company	Contact	Phone	Email
07 84 00	Firestopping	Western Industrial Services Ltd.	Ricardo Chaves	204-956-9476	<a href="mailto:rchaves@wisl.ca">rchaves@wisl.ca</a>
08 11 13	Standard Metal Doors and Frames	Allmar	Dave Fairweather	306-931-0122	<a href="mailto:dfairweather@allmar.com">dfairweather@allmar.com</a>
08 14 16	Flush Wood Doors	Allmar	Dave Fairweather	306-931-0122	<a href="mailto:dfairweather@allmar.com">dfairweather@allmar.com</a>
08 33 23	Overhead Coling Doors	Overhead Doors of Prince Albert	Ron	306-763-2866	<a href="mailto:ronohdpa@sasktel.net">ronohdpa@sasktel.net</a>
08 35 16.13	Accordion Folding Grilles	Specialty Industries	Rick Hadubiak	306-550-9720	<a href="mailto:rhadubiak@sasktel.net">rhadubiak@sasktel.net</a>
08 36 16	Sectional Doors	Overhead Doors of Prince Albert	Ron	306-763-2866	<a href="mailto:ronohdpa@sasktel.net">ronohdpa@sasktel.net</a>
08 40 00	Aluminum Storefronts and Curtain Walls	DSM Glass & Aluminum	Nick Kassian	306-249-3900	<a href="mailto:nick@dsmglass.com">nick@dsmglass.com</a>
08 44 27	Glass Fin Structures	DSM Glass & Aluminum	Nick Kassian	306-249-3900	<a href="mailto:nick@dsmglass.com">nick@dsmglass.com</a>
08 51 13	Aluminum Windows	DSM Glass & Aluminum	Nick Kassian	306-249-3900	<a href="mailto:nick@dsmglass.com">nick@dsmglass.com</a>
08 71 00	Door Hardware	Allmar	Dave Fairweather	306-931-0122	<a href="mailto:dfairweather@allmar.com">dfairweather@allmar.com</a>
08 71 43	Automatic Door Operators	Allmar	Dave Fairweather	306-931-0122	<a href="mailto:dfairweather@allmar.com">dfairweather@allmar.com</a>
08 80 50	Glazing	DSM Glass & Aluminum	Nick Kassian	306-249-3900	<a href="mailto:nick@dsmglass.com">nick@dsmglass.com</a>
08 91 19	Fixed Aluminum Louvers	Pow City Mechanical	Mitch Schuler	306-933-3133	<a href="mailto:mitschs@powcity.ca">mitschs@powcity.ca</a>
09 21 16	Drywall, Steel Stud, Acoustic Ceiling Tile	R&D Drywall Inc.	Matt Murdock	306-933-9328	<a href="mailto:mattm@rddry.ca">mattm@rddry.ca</a>
09 24 23	Portland Cement Stucco	TBD			
09 30 13	Ceramic Tiling	R&D Commercial Interiors	Fred Lockhart	306-933-9328	<a href="mailto:fred@rdcommercial.ca">fred@rdcommercial.ca</a>
09 65 10	Resilient Flooring	R&D Commercial Interiors	Fred Lockhart	306-933-9328	<a href="mailto:fred@rdcommercial.ca">fred@rdcommercial.ca</a>
09 65 23	Resinous Flooring	Stonhard	Chris Robinson	306-371-4000	
09 65 66	Resilient Athletic Flooring	Centaur Products Inc.	Bryan Hamm	403-456-6010	<a href="mailto:bhamm@centaurproducts.com">bhamm@centaurproducts.com</a>
09 68 00	Carpet Tile	R&D Commercial Interiors	Fred Lockhart	306-933-9328	<a href="mailto:fred@rdcommercial.ca">fred@rdcommercial.ca</a>
09 84 10.01	Acoustic Treatment	R&D Drywall Inc.	Matt Murdock	306-933-9328	<a href="mailto:mattm@rddry.ca">mattm@rddry.ca</a>
09 91 99	Painting	Johnsons Commercial	James Johnson	204-726-4265	<a href="mailto:james@jcservices.ca">james@jcservices.ca</a>
10 11 13	Whiteboards	CP Distribution LTD	Gerald Garcia	306-242-3315	<a href="mailto:gerald.garcia@cpdist.ca">gerald.garcia@cpdist.ca</a>
10 11 23	Tackboards	CP Distribution LTD	Gerald Garcia	306-242-3315	<a href="mailto:gerald.garcia@cpdist.ca">gerald.garcia@cpdist.ca</a>
10 14 19	Signage	PLS Signage & Graphic	Grant Findlay	306-352-2211	<a href="mailto:grant@plssign.ca">grant@plssign.ca</a>
10 14 19.01	Dimensional Letter Sign	PLS Signage & Graphic	Grant Findlay	306-352-2211	<a href="mailto:grant@plssign.ca">grant@plssign.ca</a>
10 14 53	Traffic Sign	PLS Signage & Graphic	Grant Findlay	306-352-2211	<a href="mailto:grant@plssign.ca">grant@plssign.ca</a>
10 21 24	Cubical Curtains (Welding Curtains)	Allmar	Dave Fairweather	306-931-0122	<a href="mailto:dfairweather@allmar.com">dfairweather@allmar.com</a>
10 26 13	Wall & Door Protection (Corner Guards)	CP Distribution LTD	Gerald Garcia	306-242-3315	<a href="mailto:gerald.garcia@cpdist.ca">gerald.garcia@cpdist.ca</a>
10 28 10	Washroom Accessories	Penner Doors & Hardware	Margaret Scott	306-986-4500	<a href="mailto:mscott@pennerdoors.com">mscott@pennerdoors.com</a>
10 51 13	Metal Lockers	Penner Doors & Hardware	Margaret Scott	306-986-4500	<a href="mailto:mscott@pennerdoors.com">mscott@pennerdoors.com</a>
10 57 16	Boot Racks	Penner Doors & Hardware	Margaret Scott	306-986-4500	<a href="mailto:mscott@pennerdoors.com">mscott@pennerdoors.com</a>
11 53 13	Fume Hoods	H.H. Hawkins	Tim Dyck	604-787-5253	<a href="mailto:tim@hhhawkins.com">tim@hhhawkins.com</a>
11 61 43	Stage Curtains	Trade West Equipment	Chris Hopkins	306-565-2888	<a href="mailto:chris@tradewest.ca">chris@tradewest.ca</a>
12 24 00	Window Coverings	Trade West Equipment	Chris Hopkins	306-565-2888	<a href="mailto:chris@tradewest.ca">chris@tradewest.ca</a>
12 36 53	Laboratory Countertops (Phenolic)	Bow Wood Cabinet Systems	Toby Shimwell	1-888-269-9663	<a href="mailto:design@bowwood.net">design@bowwood.net</a>
12 66 13	Telescoping Bleachers	Centaur Products Inc.	Bryan Hamm	403-456-6010	<a href="mailto:bhamm@centaurproducts.com">bhamm@centaurproducts.com</a>
14 21 23	Elevator	KONE Inc.	Traci Cluff	306-244-1812	<a href="mailto:traci.cluff@kone.com">traci.cluff@kone.com</a>
21 00 00	Fire Suppression (Sprinklers)	Pow City Mechanical	Mitch Schuler	306-933-3133	<a href="mailto:mitschs@powcity.ca">mitschs@powcity.ca</a>
22 00 00	Plumbing	Pow City Mechanical	Mitch Schuler	306-933-3133	<a href="mailto:mitschs@powcity.ca">mitschs@powcity.ca</a>
23 00 00	HVAC	Pow City Mechanical	Mitch Schuler	306-933-3133	<a href="mailto:mitschs@powcity.ca">mitschs@powcity.ca</a>
25 00 00	Integrated Automation (BMS)	Pow City Mechanical	Mitch Schuler	306-933-3133	<a href="mailto:mitschs@powcity.ca">mitschs@powcity.ca</a>
26 00 00	Electrical	Tech Electric	Jeff Parker	306-242-6401	<a href="mailto:jparker@tech-electric.ca">jparker@tech-electric.ca</a>
27 00 00	Controls	Pow City Mechanical	Mitch Schuler	306-933-3133	<a href="mailto:mitschs@powcity.ca">mitschs@powcity.ca</a>
28 00 00	Security and Fire Alarm	Tech Electric	Jeff Parker	306-242-6401	<a href="mailto:jparker@tech-electric.ca">jparker@tech-electric.ca</a>
31 00 00.15	Earthwork	D.G.M Construction Inc.	Darren Maier	306-593-7772	<a href="mailto:darrenmaier.dgm@gmail.com">darrenmaier.dgm@gmail.com</a>
31 21 13	Radon Mitigation	D.G.M Construction Inc.	Darren Maier	306-593-7772	<a href="mailto:darrenmaier.dgm@gmail.com">darrenmaier.dgm@gmail.com</a>
31 63 23	Concrete Piles	Double Star Drilling LTD.	David Rotariu	306-584-2425	<a href="mailto:david@doublestardrilling.ca">david@doublestardrilling.ca</a>
32 12 16	Asphalt Paving	Paramount Paving LTD.	Trent Bitz	306 242 6964	<a href="mailto:trentbitz@sasktel.net">trentbitz@sasktel.net</a>
32 18 16.13	Play Surfacing (Pea Gravel)	D.G.M Construction Inc.	Darren Maier	306-593-7772	<a href="mailto:darrenmaier.dgm@gmail.com">darrenmaier.dgm@gmail.com</a>
32 37 00	Exterior Site Furnishing	TBD			
32 91 00	Landscaping	TLS	Tim Scharowski	306-960-3430	<a href="mailto:tlslawncare@gmail.com">tlslawncare@gmail.com</a>
33 00 00	Site Services	D.G.M Construction Inc.	Darren Maier	306-593-7772	<a href="mailto:darrenmaier.dgm@gmail.com">darrenmaier.dgm@gmail.com</a>

## Progress Report

# Carrot River New School Replacement

JOB NO. 3377

Report Date: June 21, 2023

### WEATHER CONDITIONS

- June 2023 – The month has been mainly temperatures reaching higher than normal with most days in the high 20's or low 30's, with the temperatures expected to return to normal in the last week.

### SAFETY

First Aids	0	
Medical Aids	0	
Lost Time Accidents	0	
Orientations	12	Tech, Gun, Pow, R&D, Insu-Fibre, Vanderstelt

### PERSONNEL ON SITE

- Staff – Vince Leier, Kylee Wagner
- Subcontractors – Brxton, Elance, R&D Drywall, DSM, DGM, Pow City, Tech Electric, Haid Roofing, Ride-On, PA Overhead Door, Kone, Gunnlaugson, Vanderstelt, JCI, Prairie Controls

### PROGRESS (LAST 4 WEEKS)

- Second floor framing nearing completion
- Elevator install complete
- Elevator door masonry infills this week
- Mechanical & Electrical rough-ins continuing
- Main floor framing & drywall continuing
- Intumescent, monoglass, & fire-spray install continuing
- Existing gym demo continuing
- Clerestory framing and glassrock continuing
- Clerestory glazing continuing

### LOOK AHEAD (NEXT 4 WEEKS)

- Second floor drywall continuing
- Priming walls on second floor for mock-up
- Existing gym electrical and mechanical rough-ins starting
- EIFS continuing
- Parapets P2 & P3 starting this week
- Polished floors this week
- Cut & grade site
- Roofing – Gym and Storage Room
- Guard Rails
- Soffit framing
- Exterior concrete

### DELIVERIES

Carrot River [Project No. 3377]  
Progress Report June 21, 2023





## Progress Report

# Carrot River New School Replacement

- Steel stud, Drywall & Insulation
- Main switchboard
- Full pallet of misc Electrical
- Shower Valves
- Elevator & motors
- EIFS Scaffold & Material
- AHU 3 Steel

### SCHEDULE

Item	Date	Event	Description	Schedule Implication
01	Aug 2	Piling hitting Rocks	Unknown geotechnical conditions. Rocks exceed representation in Geotech report.	+7 days
02	Jul 28	SI 4 – Pile Cap Revised	Incorrect cage was installed. Concurrent with item 01.	
03	Aug / Sept	Grade Beam & Pile Caps	Phased grade beam installation to make up time lost during piling.	-7 days
04	Oct 12	Elevator Shaft	Wright was not able to hire out this scope and must self-perform. Affects structural steel installation start date.	+5 days
05	Oct 17	Structural Steel	Started 5 days late. October 17 <sup>th</sup> , 2022. Concurrent with item 04.	
06	Oct 26	Hollow Core	Started 2 days late. October 26 <sup>th</sup> , 2022. Concurrent with item 04 and 05.	
07	Nov / Dec 2022	Snow/Weather	Multiple significant snow falls throughout November/December slowed down construction.	+10 days
08	Nov / Dec 2022	Room 106 Masonry	Scheduling mistake for room 106 load bearing masonry. Did not account for heating and hoarding time. Should have based on the time of year.	+15 days
09	Jan 2023	Schedule Mitigation	Reviewed and adjusted slab pour timelines and phasing. Reviewed and adjusted commissioning dates and durations.	-20 days
		Totals	Current Schedule Impact Adjusted Substantial Completion Date: November 14, 2023. No change in completion date since last meeting.	+10 days
			Potential Mitigation Strategies Assessing interior fit up and exterior finishes – Durations are at a minimum. No schedule can be made back here.	

### PHOTOS

- See following pages

## Carrot River New School Replacement



Photo #1 – EIFS on Phase 3



## Carrot River New School Replacement



Photo #2 –EIFS on Phase 3

## Carrot River New School Replacement



Photo #3 – EIFS Vapour Barrier on Phase 4



## Carrot River New School Replacement



Photo #4 – Mono Glass on Overhang Phase 1

## Carrot River New School Replacement



Photo #5 – Elevator Installed



## Carrot River New School Replacement



Photo #6 – Resource Center



Photo #7 – Second Floor Drywall and Insulation



## Carrot River New School Replacement



Photo #8 – PAA Overhead Door



Photo #9 – Fire Sprinkler System



## Carrot River New School Replacement



Photo #10 – Classroom Mudded Walls

## Carrot River New School Replacement



Photo #11 – Student Commons Feature Stair



3377 Carrot River Schedule 2023-06-21																									
ID	Task Name	Duration	Start	Finish	Baseline Start	Baseline Finish	Predecessors	% Complete																	
1									M	2022, Half 2	J	S	N	2023, Half 1	J	M	M	2023, Half 2	J	S	N	2024, Half 1	J	M	M
2	Phase #1 & #2 Carrot River School Project - New Build	560 days	Mon 22-05-09	Fri 24-06-28	Mon 22-05-09	Mon 24-06-24		49%																	
3	Award	1 day	Mon 22-05-09	Mon 22-05-09	Mon 22-05-09	Mon 22-05-09		100%																	
4	Document Existing Conditions	2 days	Mon 22-06-20	Tue 22-06-21	Mon 22-06-20	Tue 22-06-21		100%																	
7	Site Mobilization	11 days	Tue 22-06-21	Tue 22-07-05	Tue 22-06-21	Tue 22-07-05		100%																	
11	Siteworks	76 days	Wed 22-06-29	Wed 22-10-12	Wed 22-06-29	Fri 22-07-29		100%																	
18	New School Building Structure	505 days	Mon 22-07-25	Fri 24-06-28	Mon 22-07-25	Mon 24-06-17		50%																	
19	Piling	27 days	Mon 22-07-25	Tue 22-08-30	Mon 22-07-25	Fri 22-08-19		100%																	
24	Grade Beams	38 days	Wed 22-08-17	Fri 22-10-07	Mon 22-08-08	Tue 22-09-27		100%																	
31	Foundation Insulation & Weeping Tile	183 days	Wed 22-09-28	Fri 23-06-09	Wed 22-08-31	Thu 22-11-03		97%																	
32	Phase 1 & 2	92 days	Wed 22-09-28	Thu 23-02-02	Wed 22-08-31	Wed 22-10-12		100%																	
38	Phase 3 & 4	96 days	Fri 22-10-14	Fri 23-02-24	Wed 22-09-14	Thu 22-11-03		100%																	
44	Insulation & Weeping Tile Paused for Winter	0 days	Wed 22-10-19	Wed 22-10-19	NA	NA	49	100%																	
45	Finish GB Insulation & WT & Backfill	30 days	Mon 23-05-01	Fri 23-06-09	NA	NA		90%																	
46	Super Structure	150 days	Mon 22-09-19	Fri 23-04-14	Wed 22-09-21	Thu 23-01-05		100%																	
47	Main Floor	63 days	Mon 22-09-19	Wed 22-12-14	Wed 22-09-21	Mon 22-11-14		100%																	
57	Second Floor	57 days	Fri 22-11-11	Mon 23-01-30	Fri 22-10-28	Thu 22-12-08		100%																	
75	Phase 5 Renovation	35 days	Mon 23-02-27	Fri 23-04-14	Fri 22-11-25	Thu 23-01-05	53	100%																	
78	Main Floor Slabs	141 days	Thu 22-10-06	Thu 23-04-20	Tue 22-10-04	Wed 23-03-15		100%																	
137	Second Floor Topping Pour	23 days	Mon 23-03-13	Wed 23-04-12	Mon 23-01-30	Thu 23-04-13		100%																	
159	Roofing	177 days	Wed 22-11-30	Thu 23-08-03	Wed 22-11-30	Thu 23-02-09		88%																	
160	Roofing Baseline	52 days	Wed 22-11-30	Thu 23-02-09	Wed 22-11-30	Thu 23-02-09		100%																	
161	Updated Roofing Schedule 2023-01-19	91 days	Mon 23-01-09	Mon 23-05-15	NA	NA		100%																	
186	Remaining Roofs	19 days	Mon 23-07-10	Thu 23-08-03	NA	NA		0%																	
187	Roof A (Gym change rooms)	10 days	Fri 23-07-21	Thu 23-08-03	NA	NA	230	0%																	
188	Roof B (Gym 132)	10 days	Mon 23-07-10	Fri 23-07-21	NA	NA		0%																	
189	Roof N (Storage 137) (defer to 2024?)	10 days	Mon 23-07-10	Fri 23-07-21	NA	NA		0%																	
190	Exterior Envelope	405 days	Mon 22-12-12	Fri 24-06-28	Wed 22-11-23	Mon 24-06-17		61%																	
191	Phase 1 & 2	172 days	Mon 22-12-12	Tue 23-08-08	Wed 22-11-23	Tue 23-04-11		74%																	
192	Exterior Wall Framing - Main Floor	10 days	Mon 22-12-12	Fri 22-12-23	Wed 22-11-23	Tue 22-12-20	65	100%																	
193	Exterior Wall Framing - Main Floor (after Christmas)	20 days	Mon 23-01-16	Fri 23-02-10	NA	NA		100%																	
194	Exterior Wall Sheeting - Main Floor	15 days	Mon 23-02-06	Fri 23-02-24	Wed 22-12-07	Tue 22-12-27	193FS-5 days	100%																	
195	OH Door Framing	3 days	Mon 23-02-27	Wed 23-03-01	NA	NA	194	100%																	
196	Exterior Wall Framing - Second Floor	10 days	Mon 23-03-06	Fri 23-03-17	Wed 22-12-07	Thu 22-12-22		100%																	
197	Exterior Wall Sheeting - Second Floor	10 days	Mon 23-03-06	Fri 23-03-17	Fri 22-12-23	Mon 23-01-09		100%																	
198	Hollow Metal Frame Install	2 days	Mon 23-03-13	Tue 23-03-14	Wed 22-12-28	Tue 23-01-10		100%																	
199	Soffit Framing	15 days	Mon 23-06-05	Fri 23-06-23	Fri 22-12-23	Thu 23-01-12		50%																	
200	Aluminum Window & Door Frames	7 days	Mon 23-02-06	Tue 23-02-14	Thu 23-01-19	Fri 23-01-27		100%																	
201	Curtain Wall Framing	7 days	Mon 23-05-29	Tue 23-06-06	Tue 23-01-10	Wed 23-01-18		100%																	
202	Masonry Veneer	28 days	Wed 23-02-15	Fri 23-03-24	Mon 23-01-30	Fri 23-03-10	200	100%																	
203	EIFS	25 days	Mon 23-06-19	Fri 23-07-21	Mon 23-02-20	Fri 23-03-24		10%																	
204	Cap Flashing	12 days	Mon 23-07-24	Tue 23-08-08	Mon 23-03-27	Tue 23-04-11	203	0%																	
205	Phase 3 & 4	112 days	Mon 23-02-13	Tue 23-07-18	Fri 22-12-09	Fri 23-05-05		69%																	
206	Exterior Wall Framing - Main Floor	15 days	Mon 23-02-13	Fri 23-03-03	Fri 22-12-09	Fri 22-12-30	193	100%																	
207	Exterior Wall Sheeting - Main Floor	15 days	Mon 23-02-13	Fri 23-03-03	Mon 23-01-02	Fri 23-01-20	193	100%																	
208	Hollow Metal Frame Install	2 days	Mon 23-03-13	Tue 23-03-14	Mon 23-01-23	Fri 23-02-03	198FS-2 days	100%																	
209	Finish Phase 4 Frame & Board	10 days	Mon 23-03-06	Fri 23-03-17	NA	NA	206	100%																	
210	Exterior Wall Framing - Second Floor	10 days	Mon 23-03-20	Fri 23-03-31	Fri 22-12-23	Thu 23-01-12	196	100%																	
211	Exterior Wall Sheeting - Second Floor	10 days	Mon 23-03-20	Fri 23-03-31	Fri 23-01-13	Mon 23-01-30	196	100%																	
212	Soffit Framing	15 days	Mon 23-06-26	Fri 23-07-14	Fri 23-01-06	Thu 23-01-26	199	0%																	
213	Curtain Wall Framing	10 days	Mon 23-06-26	Fri 23-07-07	Tue 23-01-31	Mon 23-02-20		0%																	
214	Aluminum Window & Door Frames	7 days	Mon 23-04-03	Tue 23-04-11	Tue 23-02-14	Wed 23-02-22	213FS-5 days	100%																	
215	Masonry Veneer	30 days	Mon 23-03-20	Fri 23-04-28	Thu 23-02-23	Wed 23-04-05		100%																	
216	EIFS	25 days	Mon 23-05-29	Fri 23-06-30	Thu 23-03-16	Wed 23-04-19		50%																	
217	Cap Flashing	12 days	Mon 23-07-03	Tue 23-07-18	Thu 23-04-20	Fri 23-05-05	216	0%																	
218	Phase 5	153 days	Tue 23-01-03	Thu 23-08-03	Thu 23-04-06	Mon 24-06-17		44%																	
219	Patch & Repair VB/ Envelope	10 days	Tue 23-01-03	Mon 23-01-16	Thu 23-04-06	Wed 23-05-03		100%																	
220	Masonry Veneer	15 days	Tue 23-01-17	Mon 23-02-06	NA	NA	219	100%																	
221	Tie Into Exterior Finishes	5 days	Tue 23-01-31	Mon 23-02-06	Thu 23-04-20	Wed 23-05-17	220FS-5 days	100%																	
222	New EIFS	20 days	Mon 23-07-03	Fri 23-07-28	Thu 23-05-18	Wed 23-06-28	216	0%																	

3377 Carrot River Schedule 2023-06-21																										
ID	Task Name	Duration	Start	Finish	Baseline Start	Baseline Finish	Predecessors	% Complete		M	2022, Half 2	J	S	N	2023, Half 1	J	M	M	2023, Half 2	J	S	N	2024, Half 1	J	M	M
223	Tie Into Exterior Finishes	5 days	Mon 23-07-24	Fri 23-07-28	NA	NA	222FS-5 days	0%											07-24							
224	Remove RTU	2 days	Wed 23-05-24	Thu 23-05-25	NA	NA		100%											05-24							
225	Demo Roof	10 days	Fri 23-06-02	Thu 23-06-15	NA	NA	224FS+5 days	100%											06-02							
226	**VB and Substrate foundin poor shape	0 days	Thu 23-06-15	Thu 23-06-15	NA	NA	225	100%											06-15							
227	Organize PR to replace VB and substrate	10 days	Fri 23-06-16	Thu 23-06-29	NA	NA	226	30%											06-16							
228	Demo VB and substrate	2 days	Fri 23-06-30	Mon 23-07-03	NA	NA	227	0%											06-30							
229	Patch Deck	3 days	Tue 23-07-04	Thu 23-07-06	NA	NA	228	0%											07-04							
230	Parapets	10 days	Fri 23-07-07	Thu 23-07-20	NA	NA	229	0%											07-07							
231	Roof (including new VB and substrate)	10 days	Thu 23-07-21	Thu 23-08-03	NA	NA	230	0%											07-21							
232	Remainder of Exterior Finishes	30 days	Mon 24-05-20	Fri 24-06-28	Tue 24-05-07	Mon 24-06-17		0%																		
233	Remainder of Exterior Finishes	30 days	Mon 24-05-20	Fri 24-06-28	Tue 24-05-07	Mon 24-06-17	395FS+34 days	0%																		
234	Interiors Main Floor	195 days	Wed 23-02-08	Tue 23-11-07	Mon 22-12-19	Fri 23-07-07		27%											02-08							
235	Phase 1 & 2	183 days	Wed 23-02-08	Fri 23-10-20	Mon 22-12-19	Fri 23-07-07		40%											02-08							
236	Concrete Fill Columns	3 days	Wed 23-02-08	Fri 23-02-10	Mon 22-12-19	Wed 22-12-21	90	100%											02-08							
237	*All Final Information Required for 109 P.A.A.	0 days	Fri 23-02-10	Fri 23-02-10	Wed 22-12-21	Wed 22-12-21	236	100%											02-10							
238	Interior Masonry Walls (PAA Room)	20 days	Mon 23-02-20	Fri 23-03-17	Mon 23-01-09	Thu 23-02-02	90FS+8 days	100%											02-20							
239	Hollowcore Infills	5 days	Mon 23-02-27	Fri 23-03-03	NA	NA		100%											02-27							
240	Firespray/ Intumescent	2 days	Mon 23-03-06	Tue 23-03-07	Thu 22-12-22	Fri 22-12-30	90FS+4 days,194F	100%											03-06							
241	M&E Rough-Ins	90 days	Wed 23-03-08	Tue 23-07-11	Mon 23-01-16	Fri 23-03-24	240	75%											03-08							
242	Blocking & Backing	10 days	Wed 23-03-08	Tue 23-03-21	Mon 23-01-23	Fri 23-02-10	240	100%											03-08							
243	Interior Framing	20 days	Mon 23-03-13	Fri 23-04-07	Mon 23-01-02	Fri 23-01-20	240FS+3 days	100%											03-13							
244	Exterior Wall Insulation, Poly, Drywall	10 days	Mon 23-07-10	Fri 23-07-21	NA	NA		0%																		
245	Interior Drywall	15 days	Mon 23-07-10	Fri 23-07-28	Mon 23-02-06	Fri 23-02-24		0%											07-10							
246	Tape & Mud	15 days	Mon 23-07-24	Fri 23-08-11	Mon 23-02-20	Fri 23-03-17	245FS-5 days	0%											07-10							
247	Top of Wall Details Complete & Signed Off	0 days	Mon 23-08-07	Mon 23-08-07	Mon 23-03-13	Mon 23-03-13	246FS-5 days	0%											07-24							
248	M&E Through-Wall Penetrations Complete & Signed Off	0 days	Mon 23-08-07	Mon 23-08-07	Mon 23-03-13	Mon 23-03-13	246FS-5 days	0%											08-07							
249	Elevator Install	20 days	Mon 23-05-15	Fri 23-06-09	Fri 23-01-20	Thu 23-02-16		100%																		
250	Elevator Finishing	15 days	Mon 23-06-12	Fri 23-06-30	Fri 23-03-10	Thu 23-03-30	249	0%											05-15							
251	Final Check Out & Prime Walls	5 days	Mon 23-08-07	Fri 23-08-11	Mon 23-03-13	Fri 23-03-17	248	0%											06-12							
252	Ceiling Grid	25 days	Mon 23-08-07	Fri 23-09-08	Mon 23-03-13	Fri 23-04-14	251FS-5 days	0%																		
253	Security Grill	10 days	Mon 23-08-28	Fri 23-09-08	Mon 23-04-03	Fri 23-04-14	251FS+10 days	0%											08-07							
254	M&E OH Connections into Grid	15 days	Mon 23-08-28	Fri 23-09-15	Mon 23-04-03	Fri 23-04-21	252FS-10 days	0%											08-07							
255	Painting	20 days	Mon 23-09-11	Fri 23-10-06	Mon 23-04-17	Fri 23-05-26	252	0%											08-28							
256	Flooring	20 days	Mon 23-09-11	Fri 23-10-06	Mon 23-04-17	Fri 23-05-12	254FS-5 days	0%											08-28							
257	Millwork & Countertops	20 days	Mon 23-09-25	Fri 23-10-20	Mon 23-05-01	Fri 23-06-09	256FS-10 days	0%											09-11							
258	Finishing of Glulam	15 days	Mon 23-09-25	Fri 23-10-13	Mon 23-05-15	Fri 23-06-02	255FS-10 days	0%											09-11							
259	Install Fixtures/ Appliances & Misc. Specialties	10 days	Mon 23-10-09	Fri 23-10-20	Mon 23-05-29	Fri 23-07-07	257FS-10 days	0%											09-25							
260	Phase 3	113 days	Mon 23-05-29	Wed 23-11-01	Mon 23-01-02	Fri 23-06-16		17%											10-09							
261	Firespray/ Intumescent	3 days	Mon 23-05-29	Wed 23-05-31	Mon 23-01-02	Tue 23-01-10		100%											05-29							
262	Interior Framing	10 days	Thu 23-06-01	Wed 23-06-14	Wed 23-01-11	Tue 23-01-31	261	100%											05-29							
263	M&E Rough-Ins	20 days	Thu 23-06-08	Wed 23-07-05	Wed 23-01-25	Tue 23-03-07	262FS-5 days	50%											06-01							
264	Blocking & Backing	5 days	Thu 23-06-08	Wed 23-06-14	Wed 23-02-01	Tue 23-02-14	262FS-5 days	100%											06-08							
265	Interior Drywall	10 days	Mon 23-07-31	Fri 23-08-11	Wed 23-02-08	Tue 23-02-28	245	0%											06-08							
266	Tape & Mud	15 days	Mon 23-08-07	Fri 23-08-25	Wed 23-02-22	Tue 23-03-21	265FS-5 days	0%											07-31							
267	Top of Wall Details Complete & Signed Off	0 days	Fri 23-08-25	Fri 23-08-25	Wed 23-03-15	Wed 23-03-15	266	0%											08-07							
268	M&E Through-Wall Penetrations Complete & Signed	0 days	Fri 23-08-25	Fri 23-08-25	Wed 23-03-15	Wed 23-03-15	266	0%											08-25							
269	Final Check Out & Prime Walls	5 days	Mon 23-08-28	Fri 23-09-01	Wed 23-03-15	Tue 23-03-21	268	0%											08-25							
270	Ceiling Grid	18 days	Mon 23-08-28	Wed 23-09-20	Wed 23-03-15	Fri 23-04-07	269FS-5 days	0%											08-28							
271	M&E OH Connections into Grid	15 days	Thu 23-09-07	Wed 23-09-27	Mon 23-03-27	Fri 23-04-14	270FS-10 days	0%											08-28							
272	Flooring	20 days	Thu 23-09-21	Wed 23-10-18	Mon 23-04-10	Fri 23-05-05	271FS-5 days	0%											09-07							
273	Painting	20 days	Thu 23-09-21	Wed 23-10-18	Mon 23-04-10	Fri 23-05-05	270	0%											09-21							
274	Millwork & Countertops	15 days	Thu 23-10-12	Wed 23-11-01	Mon 23-05-01	Fri 23-05-19	272FS-5 days	0%											09-21							
275	Install Lockers, Boot Racks / Specialties	10 days	Thu 23-10-19	Wed 23-11-01	Mon 23-05-22	Fri 23-06-16	272	0%											10-12							
276	Phase 4	149 days	Thu 23-04-13	Tue 23-11-07	Mon 23-01-02	Wed 23-11-01		29%											10-19							
277	Firespray/ Intumescent	3 days	Mon 23-05-29	Wed 23-05-31	Mon 23-01-02	Tue 23-01-10		100%											04-13							
278	Interior Masonry Walls	20 days	Thu 23-04-13	Wed 23-05-10	Mon 23-01-09	Tue 23-01-24	125	100%											05-29							
279	Interior Framing	10 days	Thu 23-06-01	Wed 23-06-14	Wed 23-01-11	Tue 23-01-31	277	100%											04-13							
280	M&E Rough-Ins	30 days	Thu 23-06-01	Wed 23-07-12	Wed 23-01-25	Tue 23-03-07	279FS-10 days	50%											06-01							
281	Blocking & Backing	5 days	Thu 23-06-15	Wed 23-06-21	Wed 23-02-01	Tue 23-02-14	279	100%											06-01							
282	Interior Drywall	10 days	Mon 23-08-14	Fri 23-08-25	Wed 23-02-08	Tue 23-02-28	265	0%											06-15							

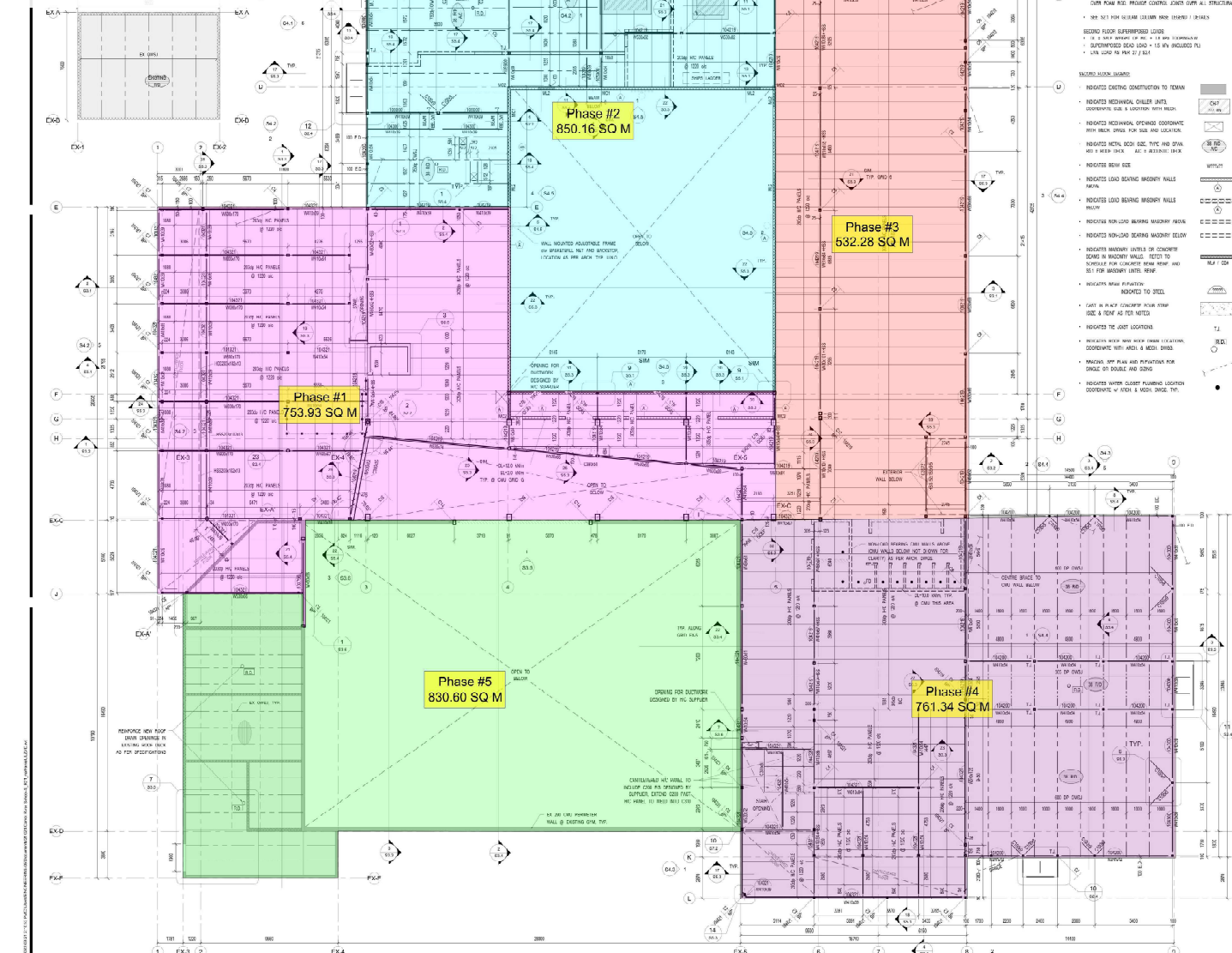


3377 Carrot River Schedule 2023-06-21																						
ID	Task Name	Duration	Start	Finish	Baseline Start	Baseline Finish	Predecessors	% Complete		M	2022, Half 2			2023, Half 1			2023, Half 2			2024, Half 1		
283	Tape & Mud	15 days	Mon 23-08-28	Fri 23-09-15	Wed 23-02-22	Tue 23-03-21	282	0%														
284	Top of Wall Details Complete & Signed Off	0 days	Fri 23-09-15	Fri 23-09-15	Wed 23-03-15	Wed 23-03-15	283	0%														
285	M&E Through-Wall Penetrations Complete & Signed Off	0 days	Fri 23-09-15	Fri 23-09-15	Wed 23-03-15	Wed 23-03-15	283	0%														
286	Final Check Out & Prime Walls	5 days	Mon 23-09-04	Fri 23-09-08	Wed 23-03-15	Tue 23-03-21	285FS-10 days	0%														
287	Ceiling Grid	15 days	Mon 23-08-28	Fri 23-09-15	Wed 23-03-15	Fri 23-04-07	286FS-10 days	0%														
288	M&E OH Connections into Grid	7 days	Mon 23-09-18	Tue 23-09-26	Mon 23-03-27	Fri 23-04-14	287	0%														
289	Flooring	20 days	Wed 23-09-27	Tue 23-10-24	Mon 23-04-10	Fri 23-05-05	288	0%														
290	Painting	20 days	Wed 23-09-27	Tue 23-10-24	Mon 23-04-10	Fri 23-05-05	288	0%														
291	Millwork & Countertops	15 days	Wed 23-10-18	Tue 23-11-07	Mon 23-05-01	Fri 23-05-19	290FS-5 days	0%														
292	Install Lockers, Boot Racks / Specialties	10 days	Wed 23-10-25	Tue 23-11-07	Mon 23-05-22	Fri 23-06-16	289	0%														
293	Phase 5	75 days	Mon 23-06-12	Fri 23-09-22	NA	NA		0%														
294	Change Rooms	55 days	Mon 23-06-12	Fri 23-08-25	NA	NA		0%														
295	Demo Change Rooms	10 days	Mon 23-06-12	Fri 23-06-23	NA	NA		0%														
296	Rough In Ceilings	15 days	Mon 23-06-26	Fri 23-07-14	NA	NA	295	0%														
297	Board Ceilings	10 days	Mon 23-07-17	Fri 23-07-28	NA	NA	296	0%														
298	Paint	5 days	Mon 23-07-31	Fri 23-08-04	NA	NA	297	0%														
299	Resinous Flooring	5 days	Mon 23-08-07	Fri 23-08-11	NA	NA	298	0%														
300	Reinstall Fixtures	10 days	Mon 23-08-14	Fri 23-08-25	NA	NA	299	0%														
301	Gym 132	65 days	Mon 23-06-26	Fri 23-09-22	NA	NA		0%														
302	Demo Servery	5 days	Mon 23-06-26	Fri 23-06-30	NA	NA	295	0%														
303	Demo Fitness Room	5 days	Mon 23-06-26	Fri 23-06-30	NA	NA	295	0%														
304	Relocate Water Fountain	2 days	Mon 23-07-03	Tue 23-07-04	NA	NA	302	0%														
305	Aluminum Curtain Wall	10 days	Mon 23-07-10	Fri 23-07-21	NA	NA		0%														
306	Repair Duct Work	10 days	Mon 23-07-10	Fri 23-07-21	NA	NA		0%														
307	Fire Sprinklers	10 days	Mon 23-07-10	Fri 23-07-21	NA	NA		0%														
308	MDF	10 days	Mon 23-07-24	Fri 23-08-04	NA	NA	305	0%														
309	Paint	10 days	Mon 23-08-07	Fri 23-08-18	NA	NA	308	0%														
310	Demo Gym Flooring	5 days	Mon 23-08-21	Fri 23-08-25	NA	NA	309	0%														
311	New Gym Flooring	10 days	Mon 23-08-28	Fri 23-09-08	NA	NA	310	0%														
312	Bleachers	10 days	Mon 23-09-11	Fri 23-09-22	NA	NA	311	0%														
313	Interiors Second Floor	154 days	Thu 23-03-30	Tue 23-10-31	NA	NA		32%														
314	Mechanical Room	114 days	Thu 23-03-30	Tue 23-09-05	NA	NA		22%														
315	Frame Mech Room Walls	10 days	Thu 23-03-30	Wed 23-04-12	Mon 23-01-02	Fri 23-01-13	144	100%														
316	House Keeping Pads	5 days	Thu 23-04-13	Wed 23-04-19	Mon 23-01-16	Mon 23-01-23	315	100%														
317	Mech Equipment Delivery	0 days	Tue 23-08-01	Tue 23-08-01	Fri 23-01-20	Fri 23-01-20		0%														
318	Lift in Mech Equipment	3 days	Tue 23-08-01	Thu 23-08-03	Mon 23-01-23	Wed 23-01-25	317	0%														
319	Frame In Remaining Walls	3 days	Fri 23-08-04	Tue 23-08-08	Thu 23-01-26	Wed 23-02-08	318	0%														
320	Mech Rough Ins	10 days	Wed 23-08-02	Tue 23-08-15	Tue 23-03-07	Mon 23-04-17	319FS-5 days	0%														
321	Elec Rough Ins	10 days	Wed 23-08-02	Tue 23-08-15	Tue 23-04-04	Mon 23-05-08	319FS-5 days	0%														
322	Controls Wiring	15 days	Wed 23-08-16	Tue 23-09-05	Tue 23-04-25	Mon 23-05-15	320	0%														
323	Board Walls	2 days	Wed 23-08-16	Thu 23-08-17	Thu 23-02-09	Mon 23-02-20	320	0%														
324	Seal Through-Wall Penetrations	2 days	Fri 23-08-18	Mon 23-08-21	Mon 23-05-15	Wed 23-05-24	323	0%														
325	Tape & Mud & Paint	8 days	Fri 23-08-18	Tue 23-08-29	Tue 23-02-21	Mon 23-03-06	323	0%														
326	Second Floor Phase 1 & 2	149 days	Thu 23-04-06	Tue 23-10-31	NA	NA		30%														
327	Interior Framing	10 days	Thu 23-04-06	Wed 23-04-19	NA	NA	151	100%														
328	M&E Rough Ins	70 days	Thu 23-04-13	Wed 23-07-19	NA	NA	327FS-5 days	70%														
329	Blocking & Backing	10 days	Thu 23-04-13	Wed 23-04-26	NA	NA	327FS-5 days	100%														
330	Top of Wall Details	10 days	Tue 23-05-09	Mon 23-05-22	Fri 23-04-21	Thu 23-05-04		100%														
331	Boarding	15 days	Mon 23-06-26	Fri 23-07-14	Fri 23-04-07	Thu 23-04-27	348FS-10 days	0%														
332	Mud & Tape	20 days	Mon 23-07-10	Fri 23-08-04	Fri 23-04-28	Thu 23-05-25	331FS-5 days	0%														
333	Top of Wall Details Complete & Signed Off	0 days	Fri 23-07-14	Fri 23-07-14	Fri 23-05-19	Fri 23-05-19	331	0%														
334	M&E Through-Wall Penetrations Complete & Signed	0 days	Fri 23-07-14	Fri 23-07-14	Fri 23-05-19	Fri 23-05-19	331	0%														
335	Final Check Out & Prime Walls	7 days	Mon 23-07-31	Tue 23-08-08	Fri 23-05-19	Mon 23-05-29	332FS-5 days	0%														
336	Ceiling Grid	10 days	Wed 23-08-02	Tue 23-08-15	Tue 23-05-23	Mon 23-06-05	335FS-5 days	0%														
337	M&E OH Connections (Grid & Other)	25 days	Wed 23-08-09	Tue 23-09-12	Tue 23-05-30	Mon 23-07-03	336FS-5 days	0%														
338	AV Rough-Ins	20 days	Wed 23-08-09	Tue 23-09-05	Tue 23-05-30	Mon 23-06-26	335	0%														
339	Painting	20 days	Wed 23-08-16	Tue 23-09-12	Tue 23-06-06	Mon 23-07-03	336	0%														
340	Flooring	20 days	Wed 23-09-06	Tue 23-10-03	Tue 23-06-27	Mon 23-07-24	337FS-5 days	0%														
341	Millwork & Countertops	15 days	Wed 23-09-27	Tue 23-10-17	Tue 23-07-18	Mon 23-08-07	340FS-5 days	0%														
342	Install Specialties	10 days	Wed 23-10-18	Tue 23-10-31	Tue 23-08-08	Mon 23-09-04	341	0%														

3377 Carrot River Schedule 2023-06-21									
ID	Task Name	Duration	Start	Finish	Baseline Start	Baseline Finish	Predecessors	% Complete	
343	Second Floor Phase 3 & 4	136 days	Fri 23-04-14	Fri 23-10-20	Mon 23-01-09	Wed 23-11-01		36%	
344	Interior Masonry Walls	15 days	Fri 23-04-14	Thu 23-05-04	Mon 23-01-09	Fri 23-01-27	158FS+1 day	100%	
345	Interior Framing	14 days	Fri 23-04-14	Wed 23-05-03	Fri 23-04-14	Wed 23-05-03	158FS+1 day	100%	
346	M&E Rough-Ins	50 days	Thu 23-04-27	Wed 23-07-05	Thu 23-04-27	Wed 23-06-07	345FS-5 days	80%	
347	Blocking & Backing	15 days	Thu 23-05-04	Wed 23-05-24	Thu 23-05-04	Wed 23-05-24	345	100%	
348	Boarding	20 days	Mon 23-06-12	Fri 23-07-07	Thu 23-05-18	Wed 23-06-14		30%	
349	Mud & Tape	25 days	Mon 23-07-03	Fri 23-08-04	Thu 23-06-08	Wed 23-07-12	348FS-5 days	10%	
350	Top of Wall Details Complete & Signed Off	0 days	Fri 23-07-07	Fri 23-07-07	Thu 23-07-06	Thu 23-07-06	348	0%	
351	M&E Through-Wall Penetrations Complete & Signed	0 days	Fri 23-07-07	Fri 23-07-07	Thu 23-07-06	Thu 23-07-06	348	0%	
352	Final Check Out & Prime Walls	10 days	Mon 23-07-10	Fri 23-07-21	Thu 23-07-06	Wed 23-07-19	351	0%	
353	Ceiling Grid	15 days	Mon 23-07-17	Fri 23-08-04	Thu 23-07-13	Wed 23-08-02	352FS-5 days	0%	
354	M&E OH Connections (Grid & Other)	20 days	Mon 23-07-31	Fri 23-08-25	Thu 23-07-27	Wed 23-08-23	353FS-5 days	0%	
355	Flooring	20 days	Mon 23-08-21	Fri 23-09-15	Thu 23-08-17	Wed 23-09-13	354FS-5 days	0%	
356	Painting	20 days	Mon 23-08-07	Fri 23-09-01	Thu 23-08-03	Wed 23-08-30	353	0%	
357	Millwork & Countertops	15 days	Mon 23-09-11	Fri 23-09-29	Thu 23-09-07	Wed 23-09-27	355FS-5 days	0%	
358	Install Fixtures & Specialties	15 days	Mon 23-10-02	Fri 23-10-20	Thu 23-09-28	Wed 23-11-01	357	0%	
359	Site Works 2023	90 days	Mon 23-05-29	Fri 23-09-29	NA	NA		6%	
360	Move Trailers & Seacans	5 days	Mon 23-05-29	Fri 23-06-02	NA	NA		100%	
361	Grade Site	20 days	Mon 23-06-12	Fri 23-07-07	NA	NA		20%	
362	Structural Door Pads	10 days	Tue 23-07-04	Mon 23-07-17	NA	NA		0%	
363	Concrete Teaching Pad & Misc Sidewalks	5 days	Tue 23-07-18	Mon 23-07-24	NA	NA	362	0%	
364	Sidewalks - Bus Lane North	10 days	Tue 23-07-04	Mon 23-07-17	NA	NA		0%	
365	Sidewalks - Bus Lane East	10 days	Tue 23-07-18	Mon 23-07-31	NA	NA	364	0%	
366	Curbs	10 days	Tue 23-07-18	Mon 23-07-31	NA	NA	364	0%	
367	Concrete Edges	10 days	Tue 23-08-01	Mon 23-08-14	NA	NA	365	0%	
368	Asphalt - Bus Lane North	10 days	Mon 23-08-07	Fri 23-08-18	NA	NA	366FS+4 days	0%	
369	Asphalt - Bus Lane East	10 days	Mon 23-08-21	Fri 23-09-01	NA	NA	366,368	0%	
370	Asphalt Walks & Tarmac	10 days	Mon 23-09-04	Fri 23-09-15	NA	NA	369	0%	
371	Asphalt - PAA Compound	5 days	Mon 23-09-18	Fri 23-09-22	NA	NA	370	0%	
372	Landscaping	30 days	Tue 23-08-15	Mon 23-09-25	NA	NA	367	0%	
373	Crusher Dust	10 days	Mon 23-09-18	Fri 23-09-29	NA	NA	370	0%	
374	Close out New School	51 days	Fri 23-09-22	Fri 23-12-01	Mon 23-06-12	Mon 23-11-13		0%	
375	Final Deficiency Reviews	45 days	Mon 23-10-02	Fri 23-12-01	Mon 23-06-12	Mon 23-11-13		0%	
376	Contractor Progress (Qa/QC) Punch List Per Area	25 days	Mon 23-10-02	Fri 23-11-03	Mon 23-06-12	Fri 23-08-25	357	0%	
377	Contractor Final Punch List Issued (all disciplines by P	20 days	Mon 23-10-09	Fri 23-11-03	Tue 23-09-05	Mon 23-10-02	376FS-20 days	0%	
378	Final Deficiency Correction Period	15 days	Mon 23-10-23	Fri 23-11-10	Tue 23-10-03	Mon 23-10-23	377FS-10 days	0%	
379	Consultant Final Inspections	15 days	Mon 23-11-13	Fri 23-12-01	Tue 23-10-24	Mon 23-11-13	378	0%	
380	Commissioning	28 days	Fri 23-09-22	Tue 23-10-31	Mon 23-09-11	Tue 23-10-10		0%	
381	Sprinkler Verification	5 days	Wed 23-09-27	Tue 23-10-03	Mon 23-08-28	Fri 23-09-01	288	0%	
382	Fire Alarm Verification	5 days	Wed 23-10-04	Tue 23-10-10	Mon 23-09-04	Fri 23-09-08	381	0%	
383	Elevator Commissioning & Sign Off	2 days	Wed 23-10-11	Thu 23-10-12	Mon 23-09-11	Tue 23-09-12	382	0%	
384	Electrical Commissioning	25 days	Wed 23-09-27	Tue 23-10-31	Wed 23-09-20	Tue 23-10-10		0%	
385	Electrical Commissioning	25 days	Wed 23-09-27	Tue 23-10-31	Wed 23-09-06	Tue 23-09-26	288	0%	
386	Mechanical Commissioning	25 days	Fri 23-09-22	Thu 23-10-26	Wed 23-09-13	Tue 23-10-10		0%	
387	Mechanical Commissioning	25 days	Fri 23-09-22	Thu 23-10-26	Wed 23-08-30	Tue 23-09-26	383FS-15 days,28	0%	
388	Final Sign Off & Occupancy Documentation	12 days	Fri 23-10-27	Mon 23-11-13	Mon 23-10-02	Fri 23-10-13	387	0%	
389	New School Substantially Complete	0 days	Mon 23-11-13	Mon 23-11-13	Fri 23-10-27	Fri 23-10-27	388,378	0%	
390	Owner Move in.	10 days	Tue 23-11-14	Mon 23-11-27	Mon 23-10-16	Fri 23-10-27	389	0%	
391	Phase #3 - Demo Existing School & Finish Site Works	140 days	Tue 23-11-28	Mon 24-06-10	Mon 23-11-13	Mon 24-06-24		0%	
392	Decommissioning & Abatement of Existing School	30 days	Tue 23-11-28	Mon 24-01-08	Mon 23-10-30	Fri 23-12-08	390	0%	
393	Demolition - Building & Site Works Structure (s)	15 days	Tue 24-01-09	Mon 24-01-29	Mon 23-12-11	Fri 23-12-29	392	0%	
394	Bulk Clean Up	10 days	Tue 24-01-30	Mon 24-02-12	Mon 24-01-01	Fri 24-01-12	393	0%	
395	Site Demo	5 days	Tue 24-03-26	Mon 24-04-01	Tue 24-04-16	Mon 24-04-22	394FS+30 days	0%	
396	Site Clean Up	5 days	Tue 24-04-02	Mon 24-04-08	Tue 24-04-23	Mon 24-04-29	395	0%	
397	Site Works Phase #3	40 days	Tue 24-04-02	Mon 24-05-27	Tue 24-05-07	Mon 24-06-10		0%	
398	Task	40 days	Tue 24-04-02	Mon 24-05-27	NA	NA	395	0%	
399	Final Inspections & Sign Off	10 days	Tue 24-05-28	Mon 24-06-10	Tue 24-05-28	Mon 24-06-10	398	0%	



- Phase #1 8114.9 SQ FT
- Phase #2 9151.5 SQ FT
- Phase #3 5729.6 SQ FT
- Phase #4 8194.6 SQ FT
- Phase #5 8940.5 SQ FT



1 SECOND FLOOR / LOWER ROOF FRAMING PLAN  
1:100

**STRUCTURAL COLUMN SCHEDULE**

TYPE	COLUMN NO.	SECTION	REMARKS
C1	1001	1001	1001
C2	1002	1002	1002
C3	1003	1003	1003
C4	1004	1004	1004
C5	1005	1005	1005
C6	1006	1006	1006
C7	1007	1007	1007
C8	1008	1008	1008
C9	1009	1009	1009
C10	1010	1010	1010
C11	1011	1011	1011
C12	1012	1012	1012
C13	1013	1013	1013
C14	1014	1014	1014
C15	1015	1015	1015
C16	1016	1016	1016
C17	1017	1017	1017
C18	1018	1018	1018
C19	1019	1019	1019
C20	1020	1020	1020
C21	1021	1021	1021
C22	1022	1022	1022
C23	1023	1023	1023
C24	1024	1024	1024
C25	1025	1025	1025
C26	1026	1026	1026
C27	1027	1027	1027
C28	1028	1028	1028
C29	1029	1029	1029
C30	1030	1030	1030
C31	1031	1031	1031
C32	1032	1032	1032
C33	1033	1033	1033
C34	1034	1034	1034
C35	1035	1035	1035
C36	1036	1036	1036
C37	1037	1037	1037
C38	1038	1038	1038
C39	1039	1039	1039
C40	1040	1040	1040
C41	1041	1041	1041
C42	1042	1042	1042
C43	1043	1043	1043
C44	1044	1044	1044
C45	1045	1045	1045
C46	1046	1046	1046
C47	1047	1047	1047
C48	1048	1048	1048
C49	1049	1049	1049
C50	1050	1050	1050
C51	1051	1051	1051
C52	1052	1052	1052
C53	1053	1053	1053
C54	1054	1054	1054
C55	1055	1055	1055
C56	1056	1056	1056
C57	1057	1057	1057
C58	1058	1058	1058
C59	1059	1059	1059
C60	1060	1060	1060
C61	1061	1061	1061
C62	1062	1062	1062
C63	1063	1063	1063
C64	1064	1064	1064
C65	1065	1065	1065
C66	1066	1066	1066
C67	1067	1067	1067
C68	1068	1068	1068
C69	1069	1069	1069
C70	1070	1070	1070
C71	1071	1071	1071
C72	1072	1072	1072
C73	1073	1073	1073
C74	1074	1074	1074
C75	1075	1075	1075
C76	1076	1076	1076
C77	1077	1077	1077
C78	1078	1078	1078
C79	1079	1079	1079
C80	1080	1080	1080
C81	1081	1081	1081
C82	1082	1082	1082
C83	1083	1083	1083
C84	1084	1084	1084
C85	1085	1085	1085
C86	1086	1086	1086
C87	1087	1087	1087
C88	1088	1088	1088
C89	1089	1089	1089
C90	1090	1090	1090
C91	1091	1091	1091
C92	1092	1092	1092
C93	1093	1093	1093
C94	1094	1094	1094
C95	1095	1095	1095
C96	1096	1096	1096
C97	1097	1097	1097
C98	1098	1098	1098
C99	1099	1099	1099
C100	1100	1100	1100
C101	1101	1101	1101
C102	1102	1102	1102
C103	1103	1103	1103
C104	1104	1104	1104
C105	1105	1105	1105
C106	1106	1106	1106
C107	1107	1107	1107
C108	1108	1108	1108
C109	1109	1109	1109
C110	1110	1110	1110
C111	1111	1111	1111
C112	1112	1112	1112
C113	1113	1113	1113
C114	1114	1114	1114
C115	1115	1115	1115
C116	1116	1116	1116
C117	1117	1117	1117
C118	1118	1118	1118
C119	1119	1119	1119
C120	1120	1120	1120
C121	1121	1121	1121
C122	1122	1122	1122
C123	1123	1123	1123
C124	1124	1124	1124
C125	1125	1125	1125
C126	1126	1126	1126
C127	1127	1127	1127
C128	1128	1128	1128
C129	1129	1129	1129
C130	1130	1130	1130
C131	1131	1131	1131
C132	1132	1132	1132
C133	1133	1133	1133
C134	1134	1134	1134
C135	1135	1135	1135
C136	1136	1136	1136
C137	1137	1137	1137
C138	1138	1138	1138
C139	1139	1139	1139
C140	1140	1140	1140
C141	1141	1141	1141
C142	1142	1142	1142
C143	1143	1143	1143
C144	1144	1144	1144
C145	1145	1145	1145
C146	1146	1146	1146
C147	1147	1147	1147
C148	1148	1148	1148
C149	1149	1149	1149
C150	1150	1150	1150
C151	1151	1151	1151
C152	1152	1152	1152
C153	1153	1153	1153
C154	1154	1154	1154
C155	1155	1155	1155
C156	1156	1156	1156
C157	1157	1157	1157
C158	1158	1158	1158
C159	1159	1159	1159
C160	1160	1160	1160
C161	1161	1161	1161
C162	1162	1162	1162
C163	1163	1163	1163
C164	1164	1164	1164
C165	1165	1165	1165
C166	1166	1166	1166
C167	1167	1167	1167
C168	1168	1168	1168
C169	1169	1169	1169
C170	1170	1170	1170
C171	1171	1171	1171
C172	1172	1172	1172
C173	1173	1173	1173
C174	1174	1174	1174
C175	1175	1175	1175
C176	1176	1176	1176
C177	1177	1177	1177
C178	1178	1178	1178
C179	1179	1179	1179
C180	1180	1180	1180
C181	1181	1181	1181
C182	1182	1182	1182
C183	1183	1183	1183
C184	1184	1184	1184
C185	1185	1185	1185
C186	1186	1186	1186
C187	1187	1187	1187
C188	1188	1188	1188
C189	1189	1189	1189
C190	1190	1190	1190
C191	1191	1191	1191
C192	1192	1192	1192
C193	1193	1193	1193
C194	1194	1194	1194
C195	1195	1195	1195
C196	1196	1196	1196
C197	1197	1197	1197
C198	1198	1198	1198
C199	1199	1199	1199
C200	1200	1200	1200
C201	1201	1201	1201
C202	1202	1202	1202
C203	1203	1203	1203
C204	1204	1204	1204
C205	1205	1205	1205
C206	1206	1206	1206
C207	1207	1207	1207
C208	1208	1208	1208
C209	1209	1209	1209
C210	1210	1210	1210
C211	1211	1211	1211
C212	1212	1212	1212
C213	1213	1213	1213
C214	1214	1214	1214
C215	1215	1215	1215
C216	1216	1216	1216
C217	1217	1217	1217
C218	1218	1218	1218
C219	1219	1219	1219
C220	1220	1220	1220
C221	1221	1221	1221
C222	1222	1222	1222
C223	1223	1223	1223
C224	1224	1224	1224
C225	1225	1225	1225
C226	1226	1226	1226
C227	1227	1227	1227
C228	1228	1228	1228
C229	1229	1229	1229
C230	1230	1230	1230
C231	1231	1231	1231
C232	1232	1232	1232
C233	1233	1233	1233
C234	1234	1234	1234
C235	1235	1235	1235
C236	1236	1236	1236
C237	1237	1237	1237
C238	1238	1238	1238
C239	1239	1239	1239
C240	1240	1240	1240
C241	1241	1241	1241
C242	1242	1242	1242
C243	1243	1243	1243
C244	1244	1244	1244
C245	1245	1245	1245
C246	1246	1246	1246
C247	1247	1247	1247
C248	1248	1248	1248
C249	1249	1249	1249
C250	1250	1250	1250
C251	1251	1251	1251
C252	1252	1252	1252
C253	1253	1253	1253
C254	1254	1254	1254
C255	1255	1255	1255
C256	1256	1256	1256
C257	1257	1257	1257
C258	1258	1258	1258
C259	1259	1259	1259
C260	1260	1260	1260
C261	1261	1261	1261

## WEEKLY PRIORITY REPORT FOR: June 19, 2023

Job No: 3377  
 Project Name: Carrot River School  
 Project Manager: Denin Kidd  
 Project Coordinators: Dustin Crawford & Halil Cetin  
 Site Superintendent: Les Schlosser, Vince Leier



The following is a list of items that we have sent for review. Priority items are at the top. **Items in bold are in danger of affecting the construction schedule. Items in red are currently causing delay to the construction schedule.**

RFIs	DESCRIPTION	DATE SENT	DATE REQ'D	COMMENTS
<b>RFI 104</b>	<b>Security Grille Pocket Door Track Support</b>	<b>12-Jun-23</b>	<b>15-Jun-23</b>	<b>Highest Priority. Please review and provide response.</b>
<b>RFI 94</b>	<b>Roof Curbs for Pedestals</b>	<b>03-May-23</b>	<b>10-May-23</b>	<b>High Priority. Please review and provide response.</b>
<b>RFI 95</b>	<b>Chiller Supports</b>	<b>10-May-23</b>	<b>17-May-23</b>	<b>High Priority. Please review and provide response.</b>
<b>RFI 99</b>	<b>Telephone Pedestal and Secondary Power Feeders</b>	<b>29-May-23</b>	<b>05-Jun-23</b>	<b>Please review and provide response.</b>
RFI 102	Furred Framing Clarifications	06-Jun-23	14-Jun-23	Please review and provide response.
RFI 103	Existing Gym AHU Supports Conflict	07-Jun-23	15-Jun-23	Please review and provide response.
CD/PCO/SI REQUIRED	DESCRIPTION	DATE REQUESTED / RECEIVED	DATE REQUIRED	COMMENTS
<b>PR 039</b>	<b>Mirror and Glazing Changes</b>	<b>06-Jun-23</b>	<b>20-Jun-23</b>	<b>Wright requesting pricing</b>
PR 030	Running Track Elevation	13-Mar-23	27-Mar-23	Wright requesting pricing.
PR 031	Site Surface Revisions - Revise Crusher Dust to Asphalt	26-May-23	09-Jun-23	Wright requesting pricing.
PR	Hose Bibbs Modifications	15-Apr-23	24-Apr-23	Refer to RFI 74r1. Wright requesting pricing.
PR 046	Site Fencing	07-Jun-23	21-Jun-23	Wright requesting pricing.
CO's TO BE ISSUED	DESCRIPTION	DATE SENT	DATE REQ'D	COMMENTS
<b>PR 032r1</b>	<b>106 Performing Arts - Fit-up Items Revised</b>	<b>14-Jun-23</b>	<b>21-Jun-23</b>	<b>Long lead items. Marked High Priority. CPR 126 submitted. Please review and approve.</b>
<b>PR 025</b>	<b>Cost Savings Coordination - EIFS</b>	<b>03-May-23</b>	<b>17-May-23</b>	<b>Marked High Priority. CPR 43 submitted. Please review and approve.</b>
SI 035	Vapour Barrier Clarifications	25-Apr-23	09-May-23	CPR 116 submitted. Please issue Price Request.
SI 048	Mech 08 117 and 118 Return	08-Jun-23	22-Jun-23	CPR 161 submitted. Please review and approve.
PR 049	Performing Arts AV	31-May-23	14-Jun-23	CPR 152 submitted. Please review and approve.
PR 051	School Name Change	19-Jun-23	03-Jul-23	CPR 160 submitted. Please review and approve.
PR 052	PAA Overhead Door Operator	08-Jun-23	22-Jun-23	CPR 157 submitted. Please review and approve.
SUBMITTALS	DESCRIPTION	DATE SENT	DATE REQ'D	COMMENTS
<b>23 09 00-1r0</b>	<b>Instrumentation &amp; Control for HVAC (SD)</b>	<b>02-Jun-23</b>	<b>13-Jun-23</b>	<b>High Priority. Please review and provide response.</b>
09 65 66-5r0	Gym Floor and Line Colors Samples	01-Jun-23	15-Jun-23	Please review and provide comments.
OTHER ITEMS				
<b>Commissioning Forms as per 01 91 33-3.1.1</b>				Please provide updated forms.
Electrical site inspections				We are expecting two inspection report
UTILITIES	CONTACT	NUMBER	STATUS	COMMENTS
SaskPower			Complete	
SaskEnergy			In progress	
SaskTel				Wright to coordinate
Site Activities				
Second floor framing nearing completion				
Second floor drywall continuing				
Elevator install complete				
Elevator door masonry infills this week				
Electrical rough-ins continuing				
Mechanical rough-ins continuing				
Priming walls on second floor				
Polished floors this week				
Main floor framing & drywall continuing				
Intumescent fire-spray install continuing				



Existing gym demo nearing completion			
Exsting gym electrical and mechanical rough-ins starting			
EIFS phase 4 continuing			
Parapets P2 & P3 starting this week			
Soffit framing starting this week			
Clerestory framing and glassrock continuing			
Clerestory glazing continuing			
Cut grade site starting this week			

## 3377 Carrot River New School Replac

RFI #	Question	Answer	Required Date	Returned Date
94	<p>Roof Curbs for Pedestals</p> <p>Refer to attachments.</p> <p>Roofing subtrade is not comfortable with the pedestal detail and have seen this specified pedestal underperform on previous jobs. Please see proposed solutions:</p> <p>1: Above the PAA Room - use the curb for MUA-1 for the receptacle.</p> <p>2. Above Home Ec Room - install a new curb for the receptacle.</p> <p>Please confirm if these suggestions are acceptable and indicate location for curb above Home Ec Room.</p>			
95	<p>Chiller Supports</p> <p>Upon review, the structural drawings do not have any detail for the chiller supports. There are structural components called up on mechanical drawing M0.1, detail HD-23. However, because this was not detailed on the structural drawings, this has not been included for.</p> <p>Please provide structural details for this support. Note that there will be additional costs for the steel posts and beams as well as for the roofing remediation for the penetrations that will be cut.</p> <p>If there is an alternate detail that can be used for the chiller supports, please advise and provide details. A concrete paver and sleeper detail was suggested to avoid having to cut into the completed roof. If the roof can avoid being cut into, there may be some cost savings.</p> <p>Reference drawings M0.1, S2.2, S3.1. See photo attached.</p>		17-May-23	
99	<p>Telephone Pedestal and Secondary Power Feeders</p> <p>Refer to attachment.</p> <p>1) Please advise if it is acceptable to have the secondary runs be slightly shifted from the SaskTel pedestal to the new school to avoid passing underneath the old storage building. By doing this, the unknown circumstances beneath the structure would be avoided.</p> <p>2) Please advise if it is acceptable to have the WP splitter installed on the main incoming power</p>		05-Jun-23	



line and put on a stand next to the SaskPower vault to enable a cleaner tie-over with the present school remaining electrified and the new school being plugged in

102 Furred Framing Clarifications 14-Jun-23

Note: All below items may have potential added costs.

1. Columns on the main floor on Grid Line C between Grid Line 6-7 do not line up. Easiest solution is to furr Room 111 wall.

Please confirm this is acceptable.

2. Columns on second floor Grid B on Stair 4 side do not line up. The easiest solution will be to furr the wall in stairwell.

Please confirm this is acceptable.

3. Columns on Grid 6 in Room 209 are out of plumb and will need to be furred on Room 209 side of wall.

Please confirm this is acceptable.

4. There are 4 beams that are fire-sprayed to outside beam on Grid line 2 from E-F where vapour barrier needs to be tied in.

Please provide detail/direction on how to proceed.

5. Stair 3 does not have enough space behind stringer to fit drywall.

Please confirm to install drywall to stringer and use firecaulking to seal to stringer and firespray the side of stringer

103 Existing Gym AHU Supports Conflict

Refer to attachment.

There are two lights and one emergency light that conflict with the existing gyms AHU supports. There is potential cost for moving lights.

Please provide direction on where to relocate these 3 lights.

104 Security Grille Pocket Door Track Support 15-Jun-23

Refer to drawings A2.1, S2.2, S6.0 and approved shop drawings.

Drawings do not show track for security grille in the storage pocket area next to elevator. There is a concrete corbel on the side of the elevator in this pocket that may conflict with steel HSS

required to hang track on.

Please provide structural steel detail for attaching grille track to in pocket area.

106

Controls Clarifications

27-Jun-23

Refer to attachment for original RFI wording.

1. Please confirm if network drops will be provided for the IP devices listed below or if they need to be installed. If they need to be installed, please confirm locations of termination points.

2. The following room sensors cannot be installed in the walls. Please confirm these can be surface mounted and provide locations.

1. UH 1 - IA - Rm 109 SE
2. UH 2 - IA - Rm 109 NE
3. WF - Welding - Rm 109.1
4. WF - Service - Rm 109.2
5. RP- Janitor - Rm 123
6. RP - Fitness - Rm 136
7. RP/WF - Gym Storage - Rm 131

8. Gymnasium existing force flow has been removed, if re-installed, sensor will have to be surface mounted.

3. The following are not shown on drawings. The proposed locations do not require surface mounting:

1. AHU 3 - Gymnasium - on wall shared with S-1
2. AV 106a,b,c,d - Performing Arts - Rm 106 on wall shared with 108/106.1 at location of 108/106.1 dividing wall
3. AV 201 - Commons - Rm 201 - on wall shared with rm 203 behind sensor for FCU-203 Please confirm these locations are acceptable or provide alternate locations.

4. The proposed location of AV-106, near the top of stair 1, will make it inaccessible after installation. Please confirm VAV box and valve can be relocated close to AV-201 away from the stairwell.

5. All the BMS systems for NESD are on the owners LAN. As such, they will need to assign addressing for any new installed devices. Please provide the networking information for the new devices and confirm they are accessible via the VPN and their BMS server. These devices beign supplied by mechanical subtrade and also for the boiler controls.



## Change Request Summary

3377 Carrot River New School Replac

June 20, 2023

Wright Construction Western Inc.

Description	CPR #	Date	Amount	Status	Change Order
CD 022 - Temporary Heat Natural Gas	84	Dec 09, 2022		Denied	Cancelled 1
CD 041 - Labour Services to NESD	142	May 02, 2023		Potential	
PR - Gym West Wall Truss Support	108	Mar 09, 2023	467.50	Approved	042
CO 047 - Piling Extras	73	Nov 21, 2022	64,140.00	Approved	47
Hollowcore Extras	72	Nov 22, 2022	6,006.00	Denied	
EW - Room 106 Metal Decking	94	Jan 20, 2023	687.50	Approved	042
SI 005 - Pile Elevation Revisions	19	Sep 06, 2022		Approved	No Cost
PR - Hose Bibbs Modifications	136	Apr 20, 2023		Potential	
PR 001 - Door Hardware Clarification	20	Sep 06, 2022	3,004.10	Approved	1
PR 004 - Mechanical Room Combustion Air	37	Sep 23, 2022	16,694.53	Approved	4
PR 007 - Tackboards Revision	45	Sep 29, 2022	3,516.70	Approved	7
CANCELLED PR 008 - Revised Flooring in Existing Change Rooms & Showers	46	Sep 29, 2022		Voided	
CANCELLED PR 009 - Block Wall Heights	47	Sep 29, 2022		Voided	
PR 010 - Electrical Revisions	50	Oct 04, 2022	6,160.68	Approved	10
CANCELLED PR 011 - PC Contactor Schematic	53	Oct 06, 2022		Voided	
CANCELLED PR 012 - PC Mag Hold Open 106.1	56	Oct 13, 2022		Voided	
PR 013 - Brick Veneer Alternate	57	Oct 13, 2022	-20,000.00	Approved	13
PR 014 - Gas Service	58	Oct 17, 2022	24,449.02	Approved	14

## Change Request Summary

3377 Carrot River New School Replac

June 20, 2023

Wright Construction Western Inc.

Description	CPR #	Date	Amount	Status	Change Order
PR 015 - Range Hood Power	68	Nov 09, 2022	1,732.86	Approved	15
CANCELLED - PR 017 - Alternate Roof Fastening Proposal	70	Nov 16, 2022		Voided	
PR 018 - Piles 20 & 34 Rework	30	Sep 14, 2022	2,786.50	Approved	18
PR 019 - Security Grille	85	Dec 07, 2022	6,825.56	Approved	19
PR 020 - Hydronic Isolation Valves	79	Nov 25, 2022	5,192.09	Approved	20
PR 021 - Alternate Display Case Hardware	83	Dec 08, 2022	-17,601.00	Approved	21
PR 023 - Building Permit	93	Jan 13, 2023	13,223.75	Approved	23
PR 024 - Revised Gym Layout in Performing Arts	104	Mar 08, 2023	7,019.70	Approved	24
PR 025 - Cost Savings Coordination - EIFS	43	Sep 29, 2022	42,565.60	Submitted	
PR 027 - Heavy Gauge Stud ES1	105	Mar 08, 2023	8,462.30	Approved	27
PR 028 - Soffits	107	Mar 08, 2023	53,595.88	Approved	028
PR 29 - Door Opening Support	92	Jan 12, 2023	6,687.80	Approved	29
VOIDED - Door Opening Support. Ref to CPR 092	106	Mar 08, 2023		Voided	
PR 030 - Running Track Elevation	114	Mar 17, 2023	32,964.80	Potential	
PR 031 - Site Surface Revisions - Revise Crusher Dust to Asphalt	162	Jun 08, 2023		Potential	
PR 032r1 - 106 Performing Arts - Fit-up Items	126	Apr 18, 2023	258,060.00	Potential	
PR 033 - Power for Theatre Seating	145	May 02, 2023	7,008.72	Approved	33
PR 034 - Plumbing Wall in Home Ec 105.2	110	Mar 14, 2023	1,171.50	Approved	34



## Change Request Summary

3377 Carrot River New School Replac

June 20, 2023

Wright Construction Western Inc.

Description	CPR #	Date	Amount	Status	Change Order
PR 035 - Lighting Control Revisions (No Cost)	121	Mar 24, 2023		Approved	35
PR 036 - Gym Change Room Senors	123	Apr 03, 2023	2,285.66	Approved	36
PR 037 - Brick Ledgers at Existing Gym	127	Mar 31, 2023	7,287.50	Approved	37
PR 038 - Mech Duct Revisions	139	Apr 21, 2023	-29,944.00	Approved	38
PR 039 - Mirror and Glazing Clarifications	158	Jun 06, 2023		Potential	
PR 040r1 - Duct Coordination (Formerly titled Exposed Duct Insulation)	141	Apr 28, 2023	9,075.00	Approved	40
PR 043 - Panel G Feeds	119	Mar 23, 2023	2,308.63	Approved	043
PR 046 - Site Fencing	159	Jun 07, 2023		Potential	
PR 048 - Home Ec 105.2 Barrier Free Millwork	147	May 11, 2023	531.30	Approved	048
PR 049 - Performing Arts A/V	152	May 24, 2023	17,513.48	Submitted	
PR 050 - Jockey Pump Power	156	May 30, 2023	4,605.75	Approved	50
PR 051 - School Name Change	160	Jun 08, 2023	9,823.00	Potential	
PR 052 - PAA Overhead Door Operator	157	Jun 07, 2023	3,748.66	Potential	
PR 002 - Shower Surround in Change Room 119	35	Sep 23, 2022	4,441.49	Approved	2
PR 26 - Deck at Glulam Columns	102	Feb 21, 2023	5,362.50	Approved	26
PR 003 - Washroom Exhaust	36	Sep 23, 2022	18,724.83	Approved	3
PR 005 - Fume Cupboard Power	38	Sep 23, 2022	1,588.19	Approved	5
CANCELLED - PR 006 - Revised Fire Resistance Rating at SW Corner	42	Sep 27, 2022		Voided	

## Change Request Summary

3377 Carrot River New School Replac

June 20, 2023

Wright Construction Western Inc.

Description	CPR #	Date	Amount	Status	Change Order
PR 045 - Room 214 Vapour Barrier Protection	140	Apr 25, 2023	935.00	Approved	45
SI 001 - AHU-1 Return Duct Size	12	Aug 17, 2022		Approved	No Cost
SI 002 - Steel Joist Framing Fabrication	16	Aug 19, 2022		Approved	No Cost
SI 003r1 - Room Finish Schedule	13	Aug 17, 2022		Approved	No Cost
SI 006 - Door Hardware Clarifications	21	Sep 07, 2022		Approved	No Cost
SI 029 - Gym Storage Block Staggered Angles	78	Nov 25, 2022	2,062.50	Approved	042
SI 035 - Vapour Barrier Clarifications	116	Mar 22, 2023	2,722.50	Submitted	
SI 038 - Domestic Cold Water Pipe Sizing	111	Mar 14, 2023		Potential	
SI 048 - Missing Return Ducts	161	Jun 08, 2023	3,002.91	Potential	

Potential Contract Changes:	307,599.37
Changes Submitted for Review:	62,801.58
Approved Change Orders:	224,490.04
Approved Contract Changes:	224,490.04



# Deficiency Report

## 3377 Carrot River New School Replac

Date: Jun 21, 2023

Item Number	Description	Responsible	Inspected On	Due By	Done On
<b>Architectural</b>					
Site Review #01	aodbt architecture + interior design	Wright Construction (Saskatoon)	Oct 25, 2022		May 11, 2023
Site Review #02	aodbt architecture + interior design	Wright Construction (Saskatoon)	Nov 15, 2022		May 11, 2023
Site Review #03	aodbt architecture + interior design	Wright Construction (Saskatoon)	Dec 22, 2022		Dec 22, 2022
Site Review #04	aodbt architecture + interior design	Wright Construction (Saskatoon)	Mar 21, 2023		Mar 22, 2023
Site Review #05	aodbt architecture + interior design	Wright Construction (Saskatoon)	Apr 04, 2023		Apr 19, 2023
Site Review #06	aodbt architecture + interior design	Wright Construction (Saskatoon)	Apr 17, 2023		Apr 18, 2023
Site Review #07	aodbt architecture + interior design	Wright Construction (Saskatoon)	May 05, 2023		Jun 15, 2023
Site Review #08	aodbt architecture + interior design	Wright Construction (Saskatoon)	May 18, 2023		Jun 14, 2023
Site Review #09	aodbt architecture + interior design	Wright Construction (Saskatoon)	Jun 06, 2023		
Site Review #10	aodbt architecture + interior design	Wright Construction (Saskatoon)	Jun 14, 2023		
<b>Permit</b>					
Site Inspection #01	Municode Services Ltd.	Wright Construction (Saskatoon)	Oct 11, 2022		Feb 09, 2023
Site Inspection #02	Municode Services Ltd.	Wright Construction (Saskatoon)	Dec 01, 2022		Feb 09, 2023
Site Inspection #03	Municode Services Ltd.	Wright Construction (Saskatoon)	Feb 09, 2023		Feb 09, 2023
Site Inspection #04	Municode Services Ltd.	Wright Construction (Saskatoon)			Jun 07, 2023
Site Inspection #05	Municode Services Ltd.	Wright Construction (Saskatoon)	Jun 16, 2023		
<b>Structural</b>					

# Deficiency Report

## 3377 Carrot River New School Replac

Date: Jun 21, 2023

Item Number	Description	Responsible	Inspected On	Due By	Done On
Progress Report #01	Prakash Consulting Ltd.	Wright Construction (Saskatoon)	Aug 25, 2022		Aug 25, 2022
Progress Report #02	Prakash Consulting Ltd.	Wright Construction (Saskatoon)	Aug 31, 2022		Aug 31, 2022
Progress Report #03	Prakash Consulting Ltd.	Wright Construction (Saskatoon)	Sep 13, 2022		Jun 07, 2023
Progress Report #04	Prakash Consulting Ltd.	Wright Construction (Saskatoon)	Sep 22, 2022		Sep 22, 2022
Progress Report #05	Prakash Consulting Ltd.	Wright Construction (Saskatoon)	Oct 20, 2022		Oct 20, 2020
Progress Report #06	Prakash Consulting Ltd.	Wright Construction (Saskatoon)	Nov 24, 2022		May 23, 2023
Progress Report #07	Prakash Consulting Ltd.	Wright Construction (Saskatoon)	Jan 13, 2023		Jun 06, 2023
Report not sent	Prakash Consulting Ltd.				
<b>Others</b>					
Field Report #01	Howes Roof Consultants Inc.	Wright Construction (Saskatoon)	Feb 07, 2023		May 23, 2023
Field Report #02	Howes Roof Consultants Inc.	Wright Construction (Saskatoon)	Feb 15, 2023		May 23, 2023
Field Report #03	Howes Roof Consultants Inc.	Wright Construction (Saskatoon)	Feb 28, 2023		May 24, 2023
Field Report #04	Howes Roof Consultants Inc.	Wright Construction (Saskatoon)	Mar 14, 2023		May 24, 2023
Field Report #05	Howes Roof Consultants Inc.	Wright Construction (Saskatoon)	Mar 20, 2023		May 24, 2023
Field Report #06	Howes Roof Consultants Inc.	Wright Construction (Saskatoon)	Mar 28, 2023		May 24, 2023
Field Report #07	Howes Roof Consultants Inc.	Wright Construction (Saskatoon)	Mar 31, 2023		Jun 07, 2023
Field Report #08	Howes Roof Consultants Inc.	Wright Construction (Saskatoon)	Apr 10, 2023		Jun 07, 2023



## ***Deficiency Report***

### **3377 Carrot River New School Replac**

Date: Jun 21, 2023

Item Number	Description	Responsible	Inspected On	Due By	Done On
Field Report #09					
	Howes Roof Consultants Inc.	Wright Construction (Saskatoon)	Apr 05, 2023		Jun 07, 2023
Field Report #10					
	Howes Roof Consultants Inc.	Wright Construction (Saskatoon)	Apr 13, 2023		Jun 07, 2023
Field Report #11					
	Howes Roof Consultants Inc.	Wright Construction (Saskatoon)	Apr 16, 2023		Jun 07, 2023
Field Report #12					
	Howes Roof Consultants Inc.	Wright Construction (Saskatoon)	Apr 28, 2023		Jun 07, 2023
Field Review No.1					
	Rimkus	Wright Construction (Saskatoon)	Mar 28, 2023		May 23, 2023
Field Review No.2					
	Rimkus	Wright Construction (Saskatoon)	Jun 07, 2023		
Reports not Sent					
	ALFA Engineering Ltd.				
Site Visit Report 01					
	Daniels Wingerak Engineering Ltd.	Wright Construction (Saskatoon)	May 25, 2023		Jun 21, 2023

## DELIVERIES REPORT

**Job No:** 3377  
**Project Name:** Carrot River  
**Project Manager:** Denin Kidd  
**Project Coordinators:** Dustin, Halil  
**Site Superintendents:** Les Schlosser, Vince Leier



SECTION	MATERIAL	SUBTRADE	LEAD TIME	REQUIRED SITE DATE
10 44 16	Fire Extinguishers & Cabinets	Pow	requested	framing for cabinets complete
08 14 16	Wood Doors	Allmar		43 doors in warehouse. Remainder of doors mid to late July delivery.
23 00 00	MUA	Pow		
25 00 00	Controls	Pow		shop drawings in review
07 46 16	EIFS	Lions	Deliveries ongoing	in progress
14 21 23	Elevator	KONE	Delivered	onsite
32 15 40	Crusher Dust	DGM		28-Aug-23
32 18 16.13	Play Surfacing			
32 37 00	Exterior Site Furnishings	TBD		
32 92 00	Landscaping Phases 1 & 2	TLS		17-Jul-23
32 37 00	Reinstall 2 Basket Ball Poles	Wright		
05 50 00	Student Commons railings	Elance	in fabrication	03-Jul-23
05 50 00	Metal Fabrications	Wright, Elance		in progress
05 75 10	Stainless Steel Countertops	Bow Wood		24-Jul-23
06 20 00	MDF Wall Panels	Bow Wood		24-Jul-23
06 20 00	TFL Panels	R&D Drywall		
09 51 99	Ceiling Grid	R&D Drywall		28-Jun-23
09 51 99	Ceiling Tile	R&D Drywall		
09 91 99	Prime Coat	Johnsons		07-Jul-23
21 00 00	Fire Protection	Pow		currently being installed
07 81 23	Intumescent Fireproofing	Gunnlaugson		currently being installed
08 51 13	Window Vents	DSM		currently being installed
08 71 00	Cylinders & Keying	Allmar		on site
05 50 00	Roof Access Ladders	Elance	in fabrication	
08 44 27	Glass Fin Structures	DSM		
07 84 00	Firestopping	WISL		
07 62 00	Cap Flashing	Haid Roofing		
09 84 10.01	Acoustic Baffles	R&D Drywall	10-Jun	10-Jun-23
14 21 23	Elevator Finishing			
27 51 16	PA System	Tech	on site	
27 53 13	Clock System	Tech	on site	
28 16 00	Intrusion Detection	Tech	on site	
28 31 02	Fire Alarm	Tech	on site	
	AV	Tech		
08 35 16.13	Security Grille	Specialty	2-3 weeks	26-Jun-23
26 00 00	Security Camera	Tech		
03 20 00	Rebar - Sidewalks	Ardel		
32 12 16	Asphalt - Bus Lanes	Paramount		
32 12 16	Asphalt - Parking Lot	Paramount		
32 17 23	Bus Lane Line Painting	TBD		
32 17 23	Asphalt Court Line Painting	TBD		
	Curbs	Ishtar		
12 66 13	Existing Gym Telescoping Bleachers	Centaur		28-Jul-23
12 66 13	Room 106 Telescoping Bleachers	Royal Stewart		28-Jul-23
03 35 36	Polished Concrete	Glossworks		19-Jun-23
07 18 00	Mech Room Floor w Coved Base	Place-Crete		
09 30 13	Ceramic Tiling	R&D Commercial	close to installation date	
09 65 66	Athletic Flooring - Gym	Centaur		20-Aug-23
09 65 66	Althletic Flooring - 106	Centaur		20-Aug-23
09 65 66	Althletic Flooring - Gym Game Lines	Centaur		20-Aug-23
09 65 23	Resinous Flooring	Stonehard		07-Jul-23
09 91 99	Paint	Johnsons		07-Jul-23
09 91 99	Finish Glulam (Stain)	Johnsons		07-Jul-23
05 50 00	Ext Ramp Railings	Elance		04-Jul-23



## DELIVERIES REPORT

**Job No:** 3377  
**Project Name:** Carrot River  
**Project Manager:** Denin Kidd  
**Project Coordinators:** Dustin, Halil  
**Site Superintendents:** Les Schlosser, Vince Leier



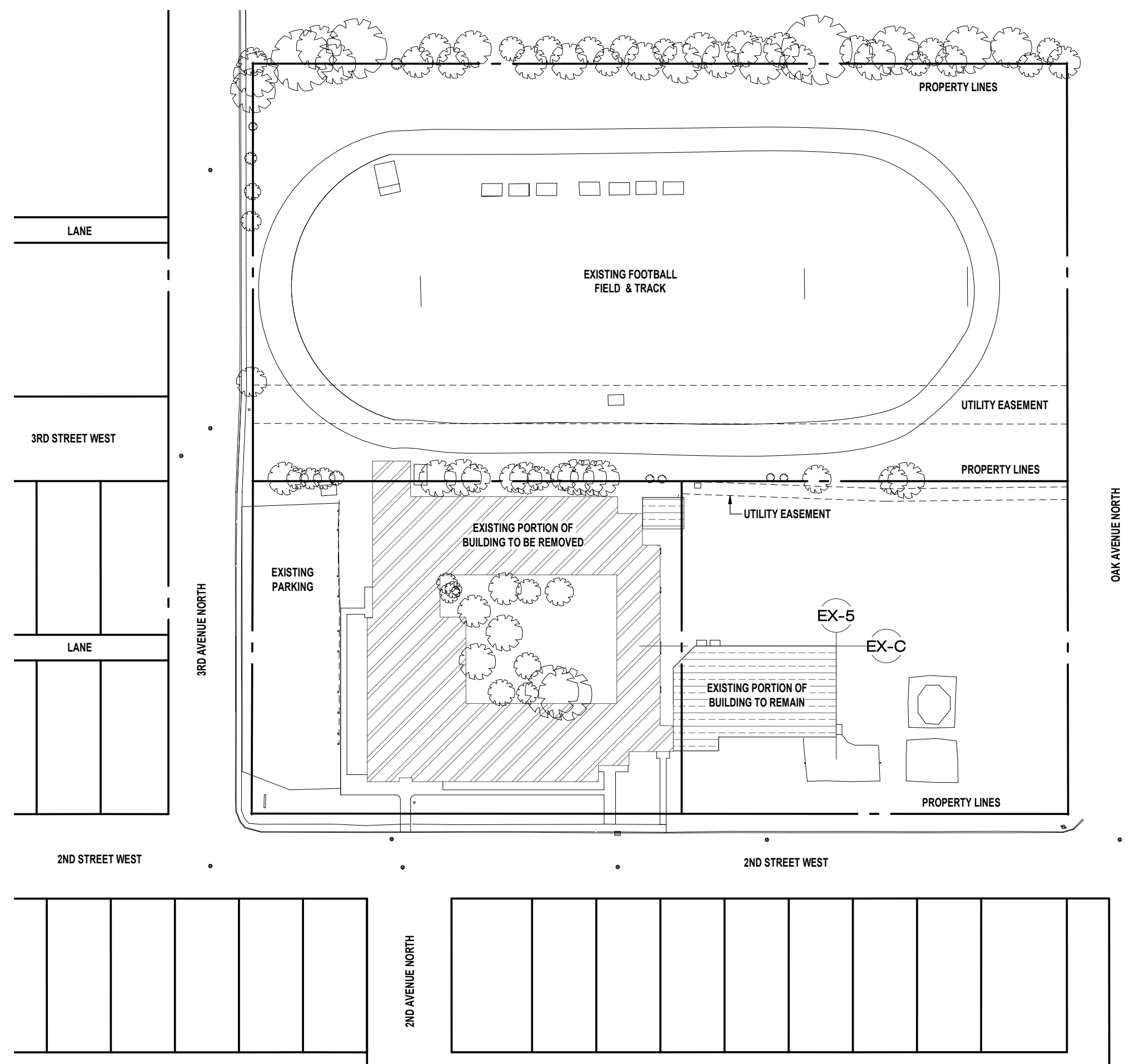
SECTION	MATERIAL	SUBTRADE	LEAD TIME	REQUIRED SITE DATE
05 50 00	Room 106 Railings	Elance		04-Jul-23
07 46 16	Soffits	RSE Exteriors		01-Aug-23
06 20 00	Handrails & Guardrails - Wood	Bow Wood	need site measurement	07-Jul-23
06 40 00	Millwork	Bow Wood	need site measurement	07-Jul-23
06 40 00	Countertops	Bow Wood	need site measurement	31-Jul-23
06 40 00	Plam Window Sills	Bow Wood	need site measurement	07-Jul-23
06 61 90	Quartz Countertops	Bow Wood	need site measurement	07-Jul-23
12 36 53	Lab Countertops	Bow Wood	need site measurement	07-Jul-23
23 00 00	Chiller	Pow	delayed	01-Sep-23
10 51 13	Metal Lockers	Penner	8-14 weeks	04-Jun-23
10 57 16	Boot Racks	Penner	close to installation date	04-Jun-23
10 28 10	Shower Shelves & Seats	Penner	close to installation date	
10 28 10	Coat Hooks	Penner	close to installation date	
26 09 24	Light Fixture Package	Tech		on site
08 91 19	Fixed Louvers	Pow		
23 00 00	Lift in Mech Room Equipment	Pow		
23 00 00	AHU's	Pow	32 weeks	03-Aug-23
08 33 23	Shutters	OH Door		
10 28 10	Washroom Accessories	Penner	close to installation date	
11 53 13	Fumehoods	Hawkins	Mid July	
	Install Fixtures	Wright		
	Install Appliances	Wright		
	Install Specialties	Wright		
10 28 10	WA - Splash Guard, Drip Pans,	Wright		
06 40 00	Display Cases	Bow Wood		
10 11 13	Whiteboards & Tackboards	CP	24-Jul	
10 14 19	Signage	PLS		Sept-Oct
10 14 19.01	Dimensional Letters	PLS		Sept-Oct
10 14 53	Traffic Signs	PLS		Sept-Oct
10 21 24	Welding Curtains			
10 26 13	Corner Guards	CP	in fabrication	
11 61 43	Stage Curtains	Tradewest	4-8 weeks	
12 24 00	Window Roller Shades	Tradewest	6-8 weeks	
32 17 23	Parking Lot Line Painting	TBD		
32 92 00	Landscaping Phases 3	TLS		
05 50 00	Garbage Bin Stops	Elance		
05 00 00	Bollards	Elance		
07 21 19	Sprayfoam	Wright		
05 50 00	Mech Room Security bar	Elance		
09 24 23	Portland Cement Stucco	TBD		

3377  
Mock-Ups

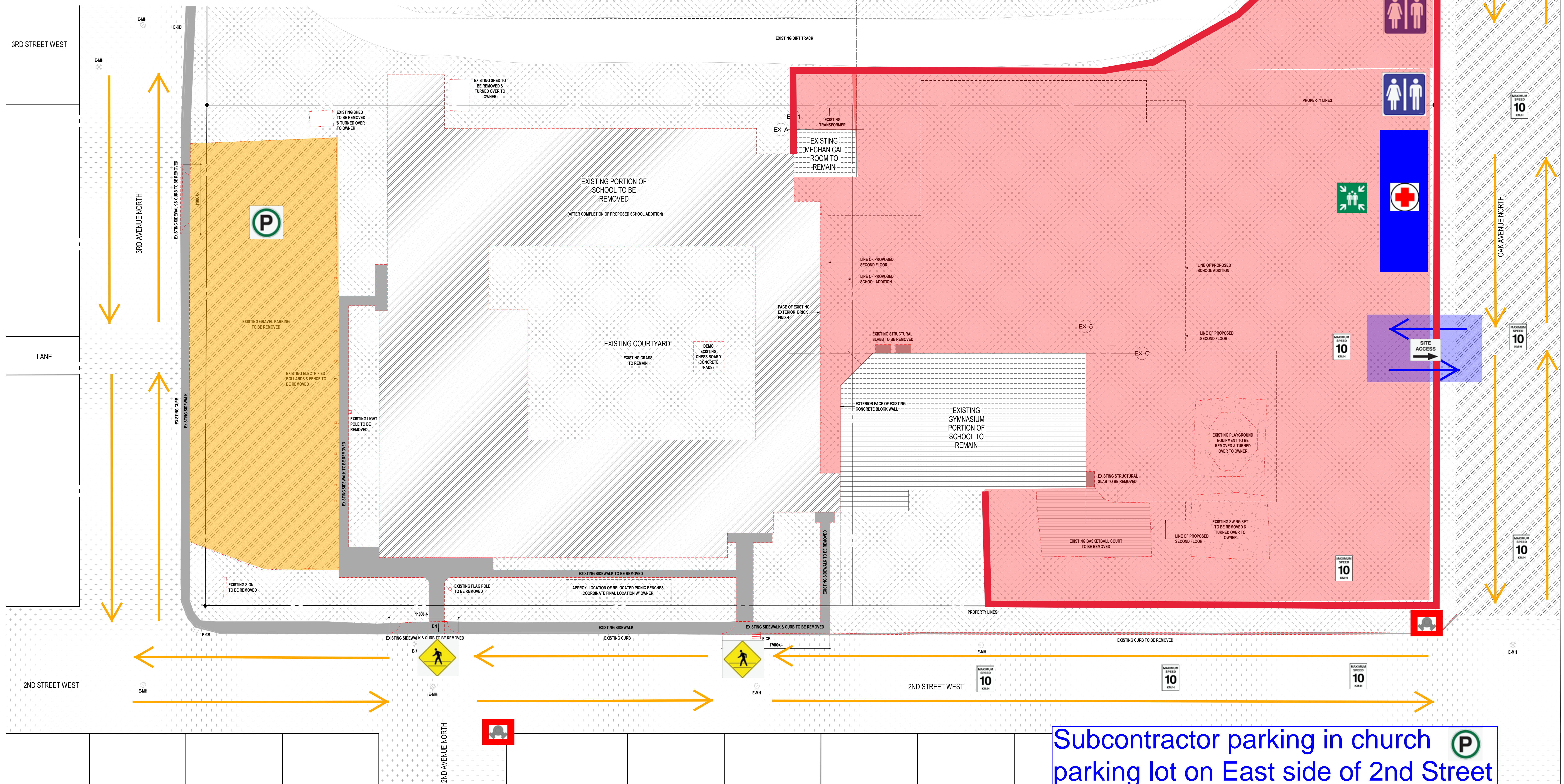


Spec	Description	Subtrade	Date	Complete
03 35 36	Polished Concrete	Glossworks	17-Apr-23	
04 04 99	Masonry	Brxton	02-Dec-22	Yes
06 40 00	Architectural Woodwork	Bow Wood		
07 17 00	Bentonite Waterproofing	Wright	22-Sep-22	Yes
07 21 19	Spray Foam	Wright	18-Jan-23	Yes
07 25 00	VB & AB	Brxton/Lions/R&D Drywall	Ongoing	Ongoing
07 26 16.13	Below-Grade Vapour Retarders	Wright	22-Sep-22	Yes
07 24 00	EIFS	Lions	17-Apr-23	
07 46 16	Soffits	TBD		
07 81 16	Cementitious Fire Proofing	Gunnlaugson	08-Mar-23	Yes
08 40 00	Aluminum Store Fronts and Curtain Walls	DSM	07-Feb-23	Yes
09 24 23	Portland Cement Stucco	TBD		
09 67 23	Resinous Flooring	Stonhard		
12 36 53	Lab Countertops	Bow Wood		
26 52 00	LED Lighting	Tech		
31 21 13	Radon Mitigation	DGM	31-Jan-23	Yes
32 92 20	Sod	TLS		





1 EXISTING / DEMO SITE KEY PLAN  
1:1000

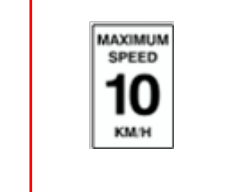


2 EXISTING / DEMO SITE PLAN  
1:250

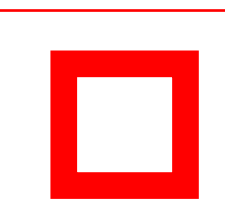
## Legend



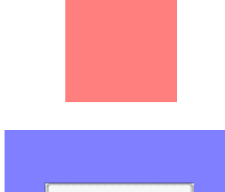
- Pedestrian crossing



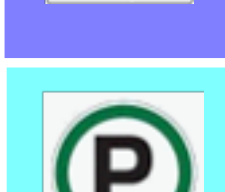
- Speed limit on site and roads adjacent to site



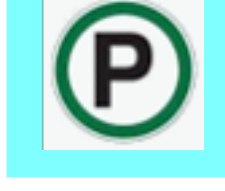
- Construction Fence



- Construction Area



- Site access



- Construction Parking



- First aid station, eye wash, fire extinguisher



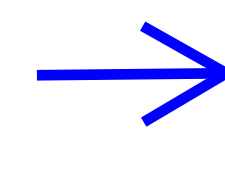
- Muster Point



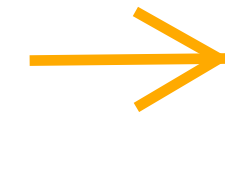
- Site Trailer/Office



- Washrooms



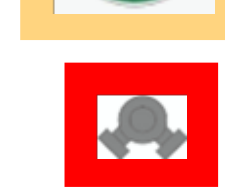
- Flow of Traffic (construction equipment)



- Flow of Traffic (vehicles)



- Staff and Students Parking

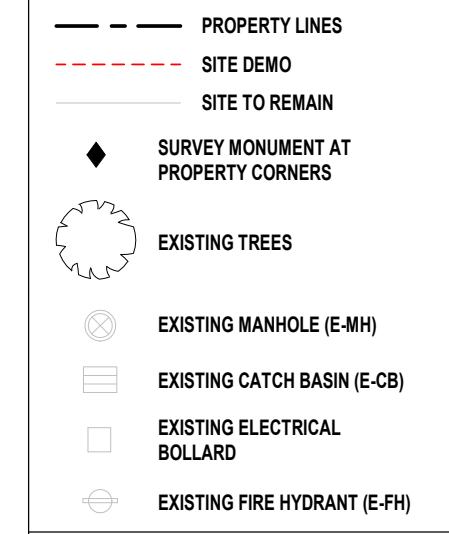


- Fire Hydrant



- Subgrade trailers and seacan storage

### SITE DEMOLITION LEGEND



GENERAL NOTES:  
1. REMOVE EXISTING DRIVE BACKS AND TURN OVER TO OWNER FOLLOWING COMPLETION OF PHASE 1 AND PRIOR TO PHASE 2.  
2. RELOCATE ALL EXISTING PICNIC BENCHES LOCATED IN PHASE 1 AREA OF CONSTRUCTION TO LOCATION PROVIDED. REMOVE & TURN OVER ALL PICNIC BENCHES TO OWNER FOLLOWING COMPLETION OF PHASE 2 AND PRIOR TO PHASE 3.

### EXISTING SURFACING LEGEND

